

 #GWF2020



GWFF

GEOSPATIAL WORLD FORUM

**TRANSFORMING
ECONOMIES IN** **5G** **ERA**

The Geospatial Way!

7-9 April 2020 /// Amsterdam

www.geospatialworldforum.org



Defence and Intelligence

Geospatial World Forum 2012

Air Chief Marshal Sir Stuart Peach
KCB, CBE, BA, MPhil, DTech, DLitt, FRAeS, ADC, RAF

Commander Joint Forces Command



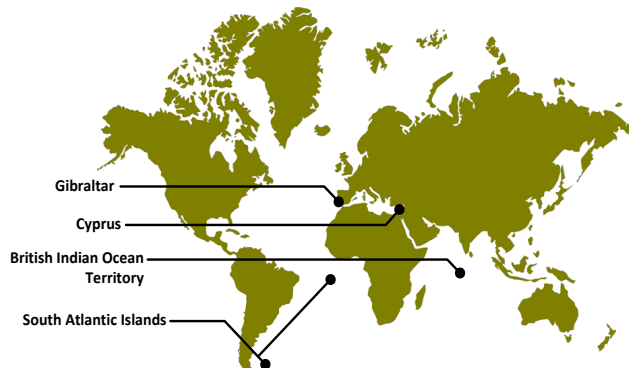
Joint Forces Command

What is it?

Joint Forces Command

Overview for Initial Operating Capability

Permanent Joint Operating Bases (PJOBs)



Subordinate Commands

Joint Arms Control Implementation Group (JACIG)	RAF Henlow, Bedfordshire
HQ Surgeon General (HQ SG)	Whittington Barracks, Lichfield, Staffordshire
Joint Forces Command HQ (JFC HQ)	
Permanent Joint HQ (PJHQ)	
Joint Force Logistic Component (JFLogC)	
Joint Force HQ (JFHQ)	Northwood HQ, Middlesex
Defence Centre of Training Support (DCTS)	RAF Halton, Buckinghamshire
Defence Cyber Operations Group (DCOG)	
Joint Cyber Unit {Cheltenham} (JCU{C})	GCHQ, Cheltenham, Gloucestershire
Defence Academy (DefAc)	
Development, Concepts and Doctrine Centre (DCDC)	Shrivenham, Wiltshire
Defence Intelligence (DI)	MOD, Whitehall, London
Directorate of Special Forces (DSF)	London
Joint Counter Terrorism Training and Advisory Team (JCTTAT)	Risborough Barracks, Folkestone, Kent

Budget

JFC*	£1.2 billion
------	--------------

*Financial Year 12/13. Does not include Net Additional Cost for Military Operations (NACMO).

Personnel[†]

Location	Military	Civilian
JFC HQ	92	51
Subordinate Commands	7829	4699
PJOBs	4554	1705 [°]
Sub Totals	12475	6455
Afghanistan	9500	
Broader Middle East	550	
UN Deployments	300	
Other	<50	
Deployed Sub Total	10400	
Total	29330	

[†]Figures are indicative and liable to change.

[°]Figure includes 1588 locally engaged civilians.



Joint Forces Command

Overview for Initial Operating Capability

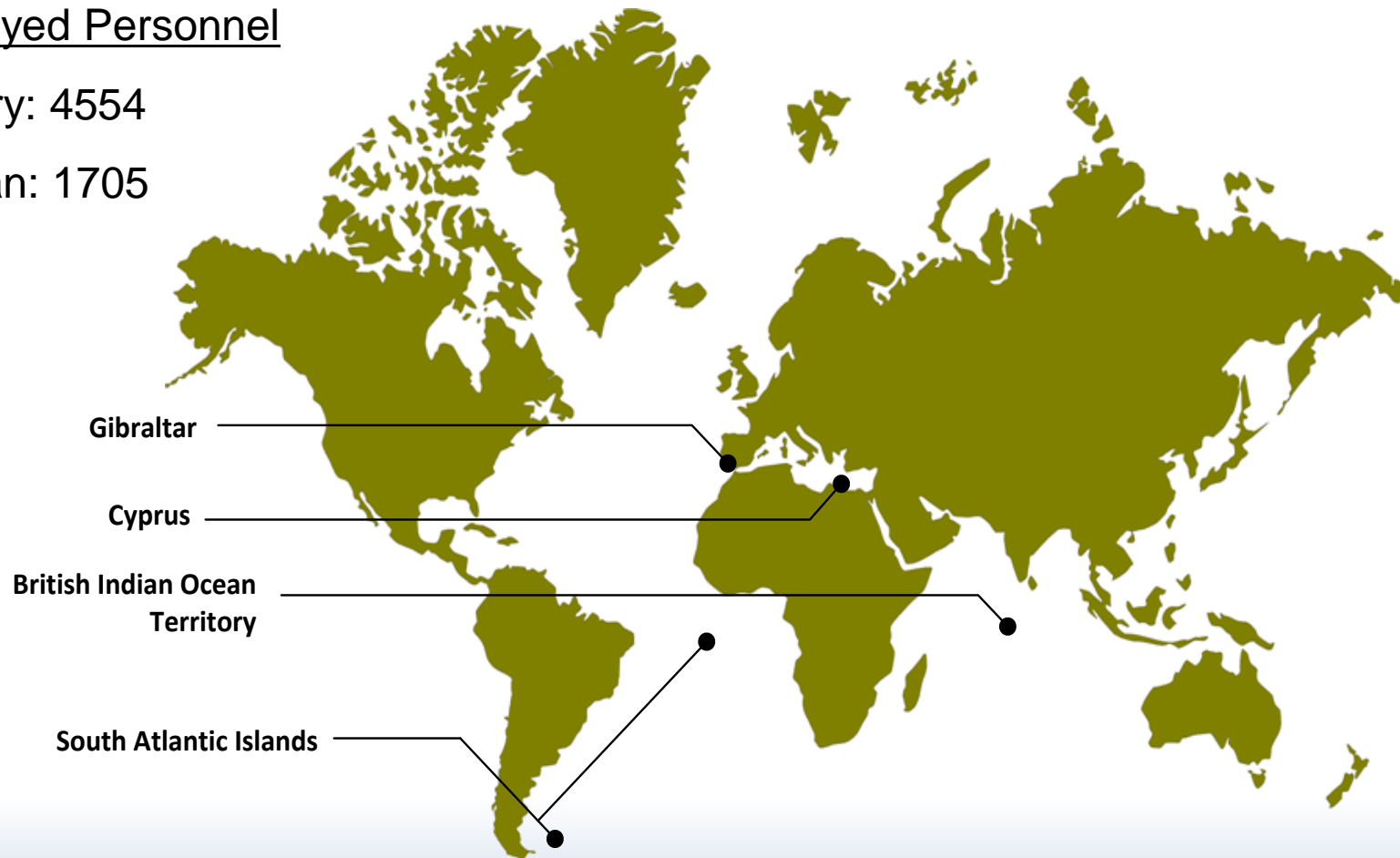


Permanent Joint Operating Bases (PJOBs)

Deployed Personnel

Military: 4554

Civilian: 1705



Comd JFC's Mission

- **Command, direct and prepare assigned joint capabilities** in readiness for employment by the designated Joint Force commander, and in support of Defence Outputs.
- **Develop joint warfare** through education, assessment, operational lessons analysis, research, experimentation, concepts and doctrine to ensure the delivery of relevant, agile, balanced and coherent joint operational capability.
- **Co-ordinate the development of joint contingent capability** and inform future joint contingent capability against DSD and DBSO 3.
- Act as the unifying **Joint User** for single Service enabling capabilities in order to ensure their effective delivery as part of a balanced and coherent joint operational capability.
- **Inform and advise on joint operational capability** in order to shape future Joint Force design.

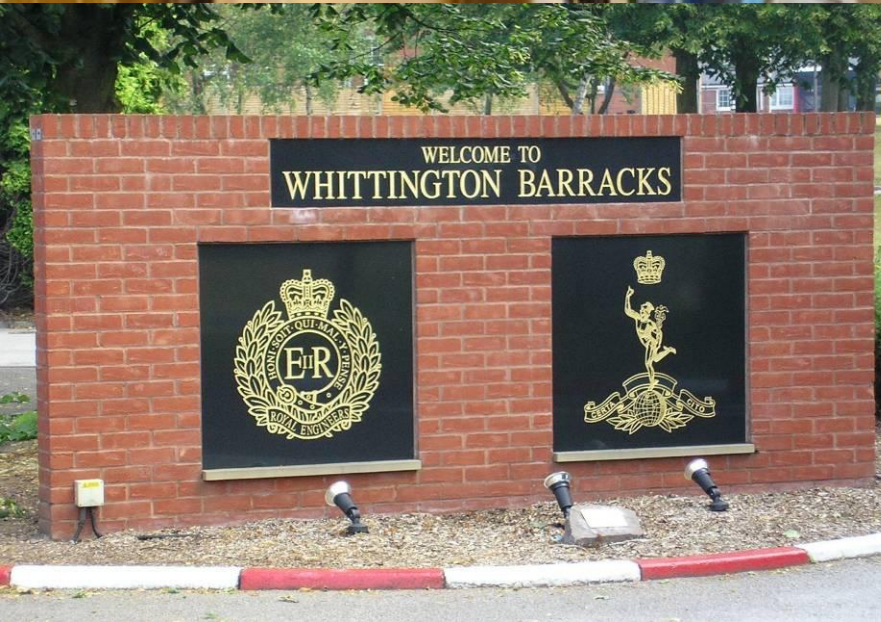
In order to ensure the coherence of the joint force and the employment of joint enablers

Reference: JFC Design Paper, D/VCDS/5/1/2 dated 4 Jan 12

Joint Forces Command – Meet the Board



Joint Forces Command



Surgeon General (SG)

Joint Forces Command



Permanent Joint Headquarters (PJHQ)

Joint Forces Command



Directorate of Special Forces (DSF)

Joint Forces Command



Defence Academy (DefAc)

Joint Forces Command



Defence Intelligence (DI)

Joint Forces Command



Development Concepts And Doctrine Centre

Joint Forces Command



Permanent Joint Operating Bases (PJOBs)

Joint Forces Command



Joint Warfare (JW)

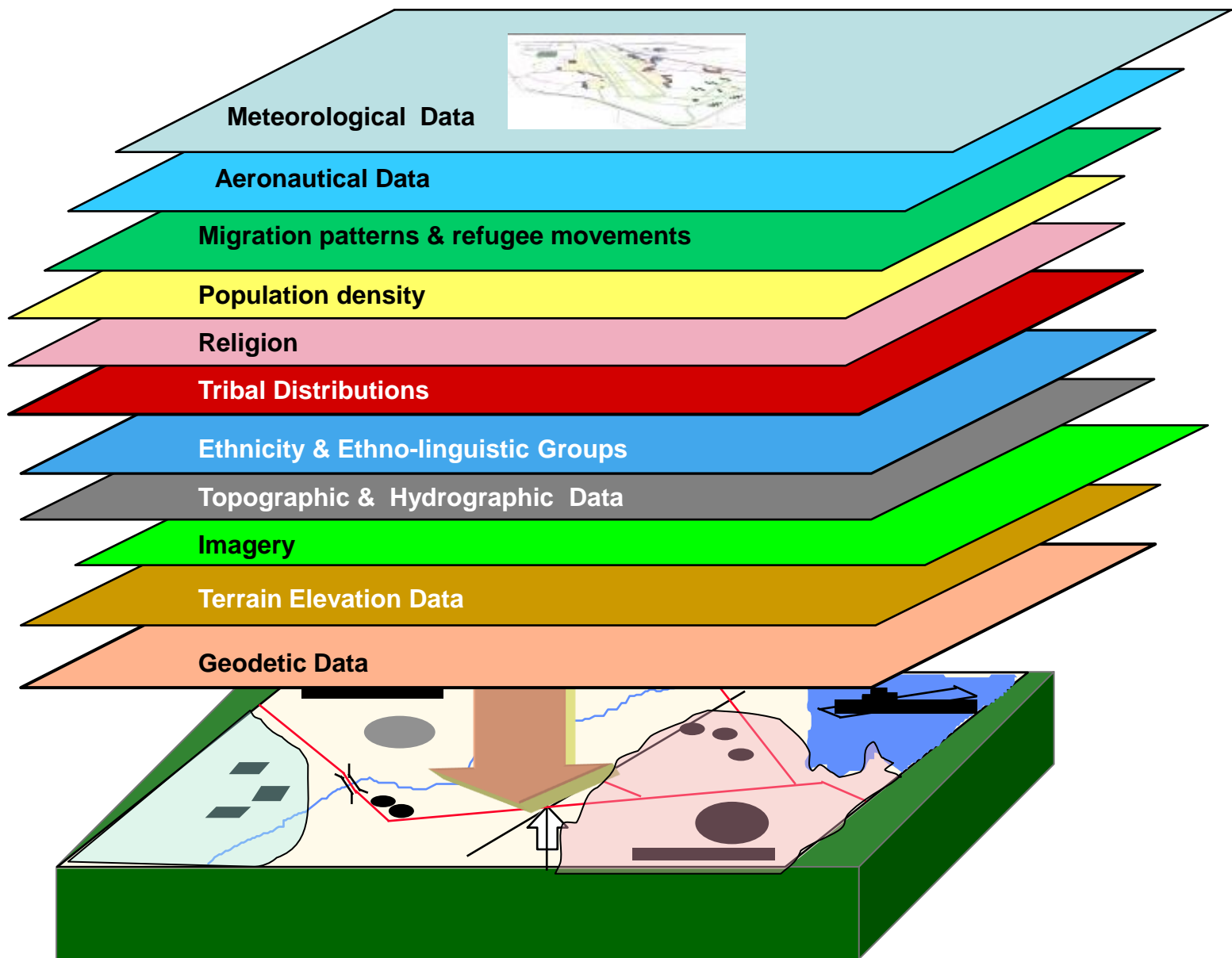
Joint Forces Command

Thesis:

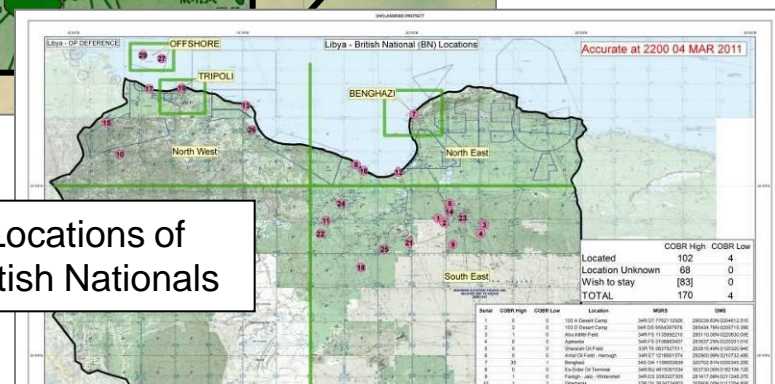
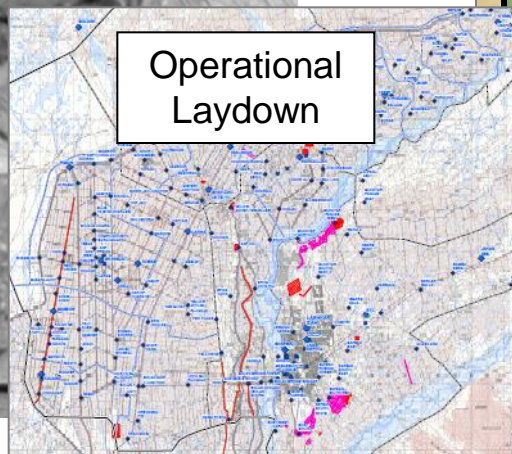
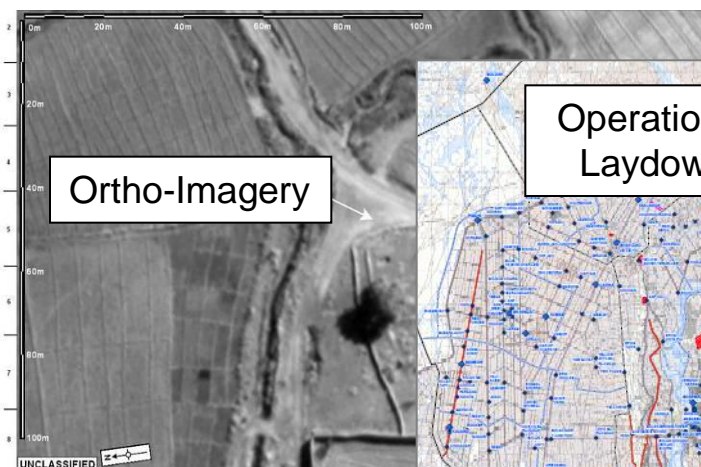
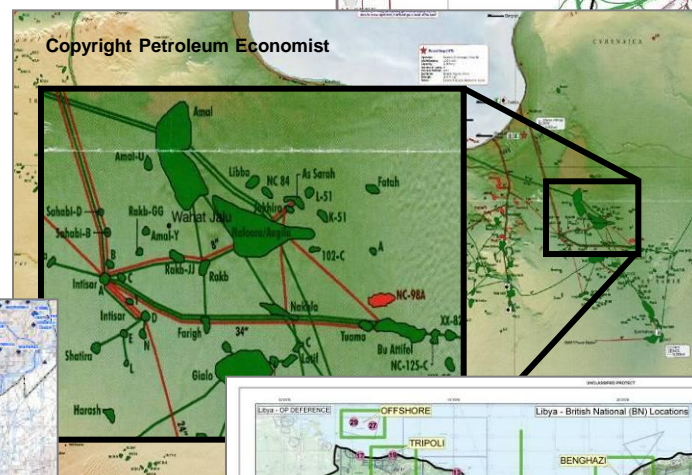
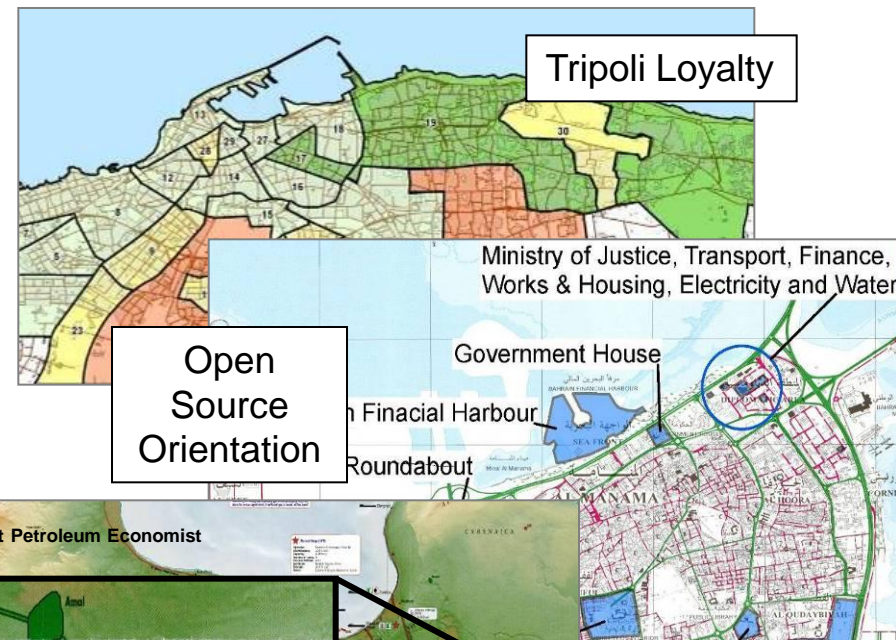
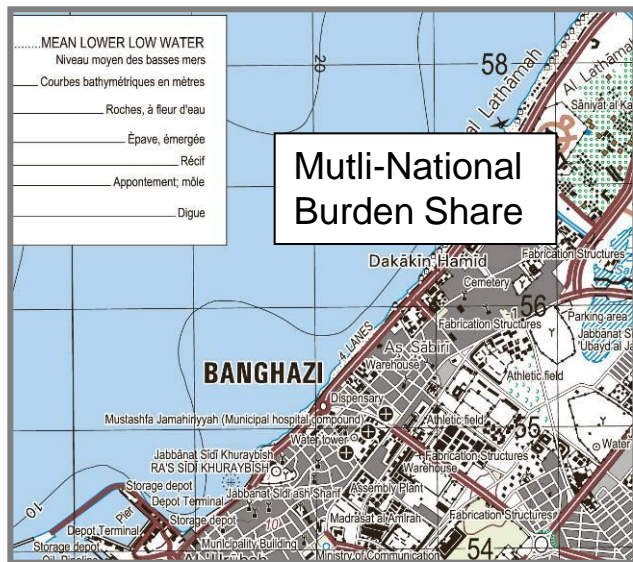
- Geography Matters
- Geography creates understanding
- Enables military operations
- Emphasises the physical and human environment
- Can support humanitarian relief

Situational Awareness through:

- Visualisation that adds value
- Single version of the truth
- Simpler (to use) tools
- Interoperable database



Situational Awareness:



Geospatial Intelligence Can:

- Guide collection assets
- Provide focused briefing support
- Catalogue, Organise and Understand Existing Data
- Warn of environmental and other risks
- Catalogue and organise mensurated data
- Provide feedback
- Improve operational effectiveness and efficiency

This aerial map displays the A2Q area in the Bronx, New York. The map is overlaid with a grid and features numerous numbered locations (e.g., 1, 2, 3, 4, 5, 6, 7, 8, 9, 10, 11, 12, 13, 14, 15, 16, 17, 18, 19, 20, 21, 22, 23, 24, 25, 26, 27, 28, 29, 30, 31, 32, 33, 34, 35, 36, 37, 38, 39, 40, 41, 42, 43, 44, 45, 46, 47, 48, 49, 50, 51, 52, 53, 54, 55, 56, 57, 58, 59, 60, 61, 62, 63, 64, 65, 66, 67, 68, 69, 70, 71, 72, 73, 74, 75, 76, 77, 78, 79, 80, 81, 82, 83, 84, 85, 86, 87, 88, 89, 90, 91, 92, 93, 94, 95, 96, 97, 98, 99, 100). Yellow lines delineate specific geographic boundaries or routes. The map shows a mix of urban development, including buildings and streets, and open areas.





Hypothetical Tactical Support Graphic

Compounds of Interest - Overview

UNCLASSIFIED



EXAMPLE 0001a

0m 10m 20m 30m 40m 50m

10m

20m

30m

40m

50m

- Compound Outline
- Building Outline
- Route Width <5m
- Watercourse
- Track
- Canalised
- Probable Wall
- Door
- Window
- Pedestrian Access
- Culvert
- Footbridge
- Fording Point
- Environmental Shelter
- Vegetation
- Surface Water
- Admin/Sleeping Area

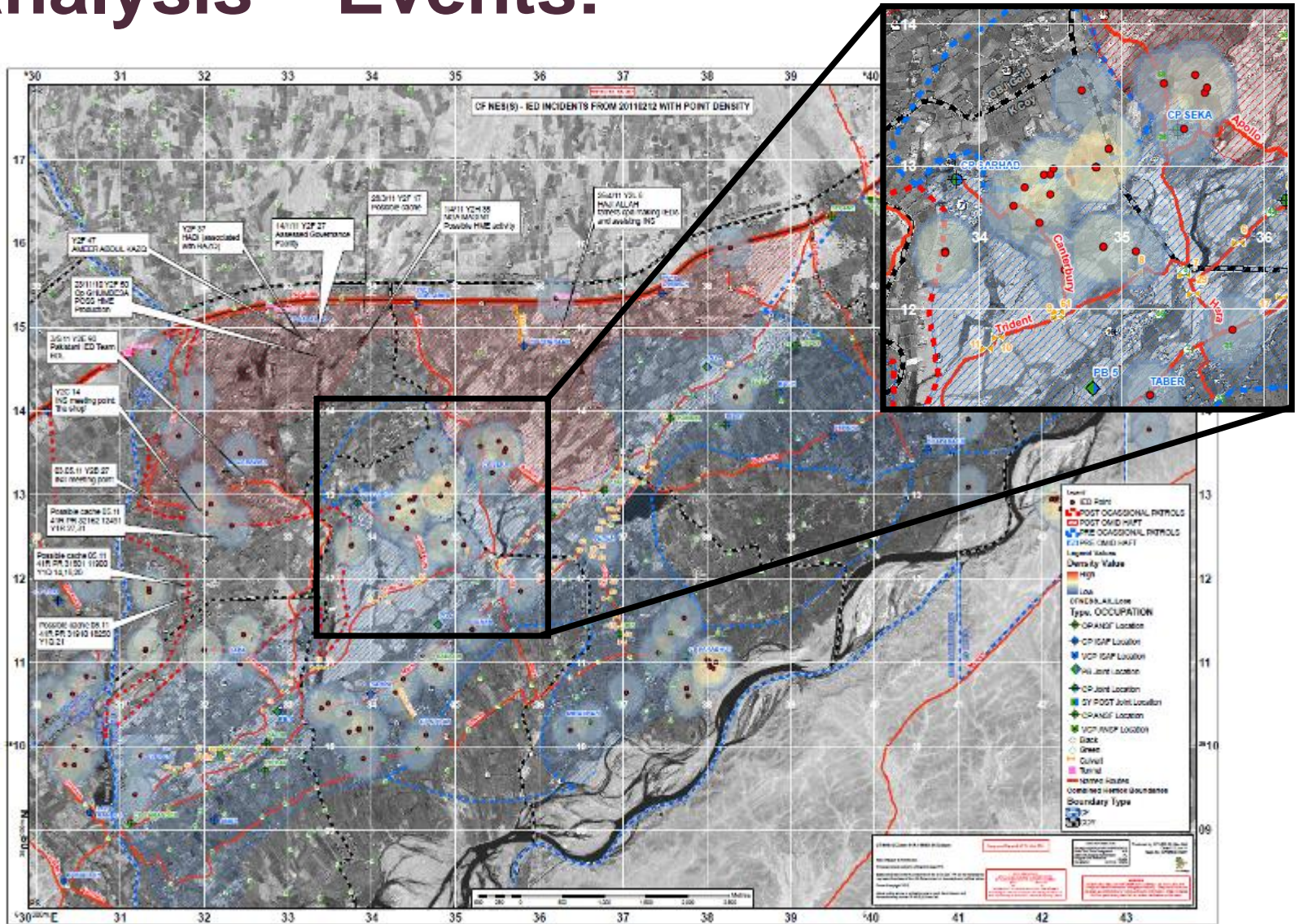


Copyright 2011 Digital Globe Nextview Licence

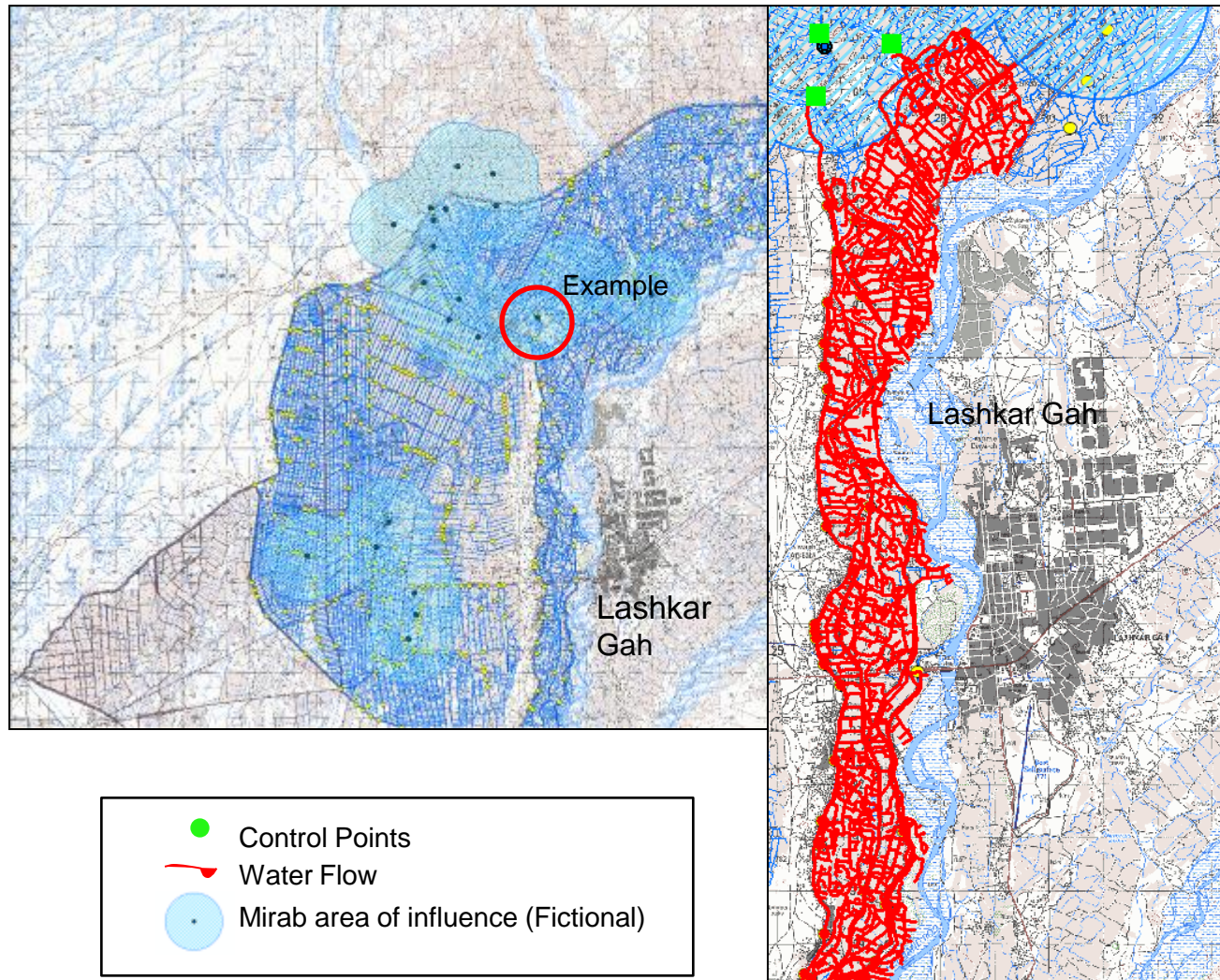
UNCLASSIFIED

All measurements and geo-coordinates are approximate.

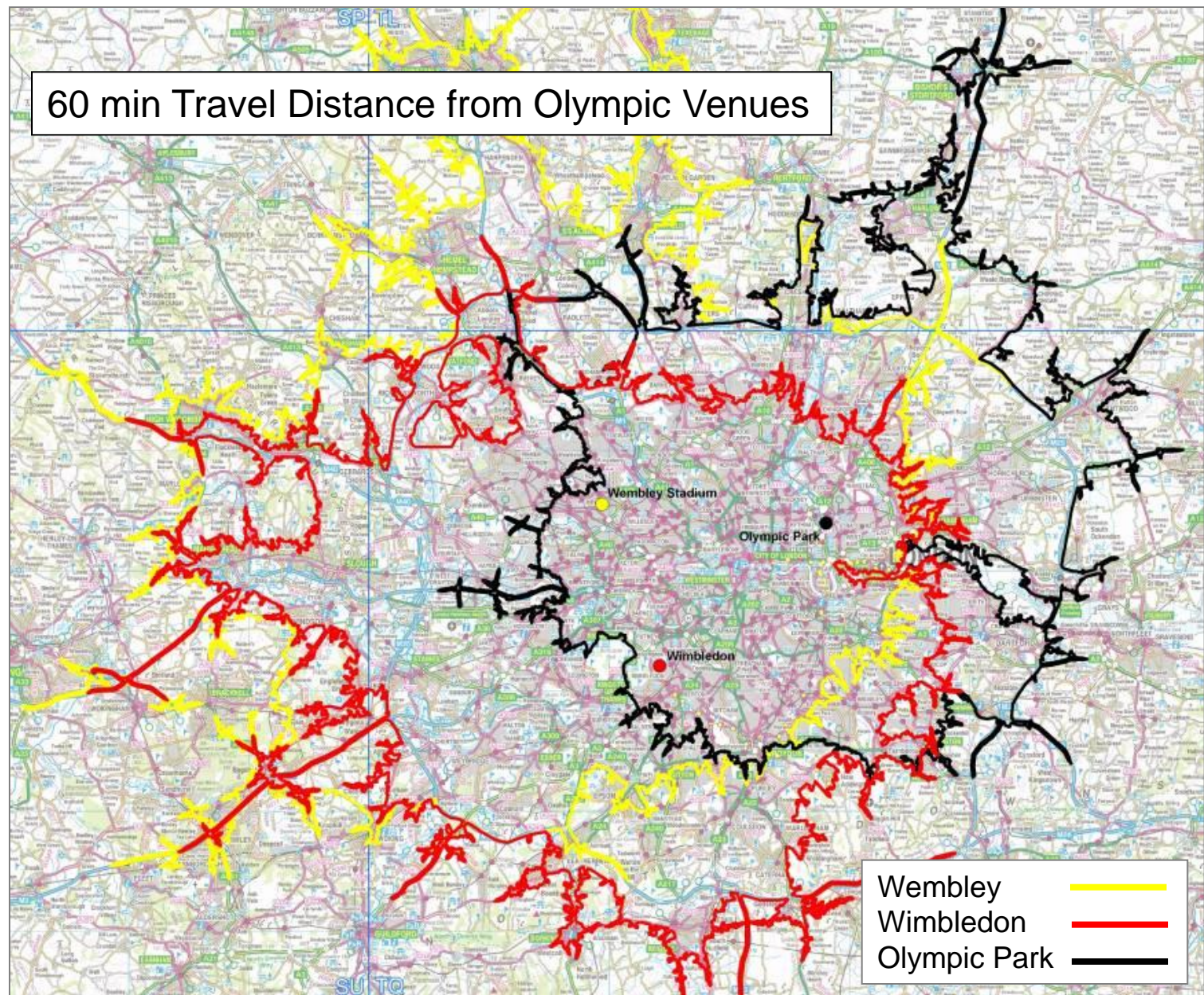
Analysis – Events:



Analysis - Water Networks in AFG:



60 min Travel Distance from Olympic Venues



Opportunities:

- Common set of interests in geospatial community
- Existing partnerships can be enhanced
- We are all information managers now
- Government sector has no monopoly in innovation
- Dissemination in **time** is critical



GeoViewer on Fixed Restricted & Secret Architecture



So What?

- Geography still matters
- Partnerships need more attention
- Team-based outcomes cross traditional tribes/barriers
- Integration to meet customer needs (how does customer know?)
- Making complexity simple

Defence and Intelligence

Geospatial World Forum 2012

Air Chief Marshal Sir Stuart Peach
KCB, CBE, BA, MPhil, DTech, DLitt, FRAeS, ADC, RAF

Commander Joint Forces Command

