

Workshop: Geo-ICT in agriculture – unlocking knowledge capital of the farmers (other sources!!!!!!)

24.-25.1.2017 HYDERABAD, India - GeoAgro 2017

PROGIS INTEGRATED AGRO SOLUTIONS and EC satellite modules SENTINEL II – „A PICTURE ALONE IS TOO LESS“



disclaimer

Materials provided on this Paper are provided “as is”, without warranty of any kind, either express or implied, including, without limitation, warranties of merchantability, fitness for a particular purpose and non-infringement. The International Agency for Development and Integration specifically does not make any warranties or representations as to the accuracy or completeness of any such Materials. The International Agency for Development and Integration periodically adds, changes, improves or updates the Materials on this Paper without notice. Under no circumstances shall the International Agency for Development and Integration be liable for any loss, damage, liability or expense incurred or suffered that is claimed to have resulted from the use of this Paper, including, without limitation, any fault, error, omission, interruption or delay with respect thereto. The use of this Paper is at the User and/or Member’s sole risk. Under no circumstances, including but not limited to negligence, shall the International Agency for Development and Integration or its affiliates be liable for any direct, indirect, incidental, special or consequential damages, even if the International Agency for Development and Integration has been advised of the possibility of such damages.

The User and/or Member specifically acknowledges and agrees that the International Agency for Development and Integration is not liable for any conduct of any User and/or Member.

This Paper may contain advice, opinions and statements of various information providers. The International Agency for Development and Integration does not represent or endorse the accuracy or reliability of any advice, opinion, statement or other information provided by any information provider, any User and/or Member of this Paper or any other person or entity. Reliance upon any such advice, opinion, statement, or other information shall also be at the User and/or Member’s own risk. Neither the International Agency for Development and Integration nor its affiliates, nor any of their respective agents, employees, information providers or content providers, shall be liable to any User and/or Member or anyone else for any inaccuracy, error, omission, interruption, deletion, defect, alteration of or use of any content herein, or for its timeliness or completeness, nor shall they be liable for any failure of performance, computer virus or communication line failure, regardless of cause, or for any damages resulting therefrom.

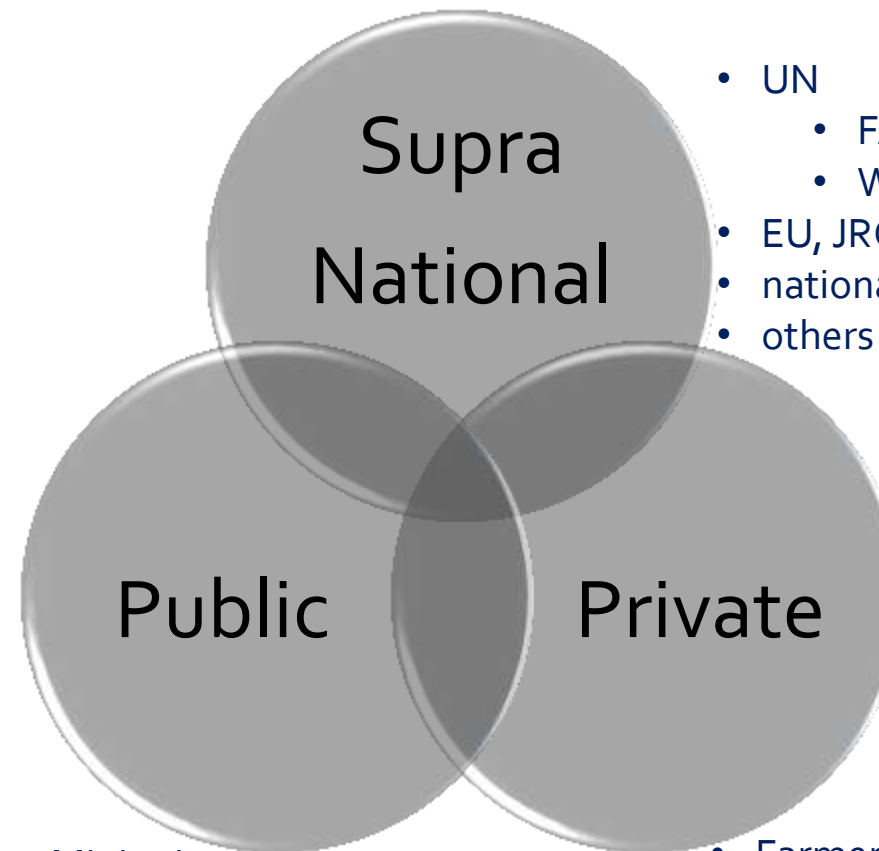
As a condition of use of this Paper, the User and/or Member agrees to indemnify the International Agency for Development and Integration and its affiliates from and against any and all actions, claims, losses, damages, liabilities and expenses (including reasonable attorneys’ fees) arising out of the User and/or Member’s use of this Paper, including, without limitation, any claims alleging facts that if true would constitute a breach by the User and/or Member of these Terms and Conditions. If the User and/or Member is dissatisfied with any Material on this Paper or with any of its Terms and Conditions of Use, the User and/or Member’s sole and exclusive remedy is to discontinue using the Paper.

This Paper may contain links and references to third-party web Papers. The linked Papers are not under the control of the International Agency for Development and Integration, and the International Agency for Development and Integration is not responsible for the content of any linked Paper or any link contained in a linked Paper. The International Agency for Development and Integration provides these links only as a convenience, and the inclusion of a link or reference does not imply the endorsement of the linked Paper by the International Agency for Development and Integration.

Aim

ICT BACKBONE INTERSECTION
for
PUBLICUSERS
PRIVATEUSERS

EC - INSPIRE



- UN
 - FAO, WAY, ITU
 - WHO, GFAR
- EU, JRC, AU,
- national, regional,
- others

- Ministries
- Regional and local admin
 - Advisory organizations
 - Subsidy organizations
 - Chambers if av.
- Land consolidation units
 - R&D and education

- Farmers, cooperatives
- Agro banks, insurance
- Certification bodies
- Control organizations
- Supply agencies
- Transport sector
- Food – feed industry

I	A
E	I

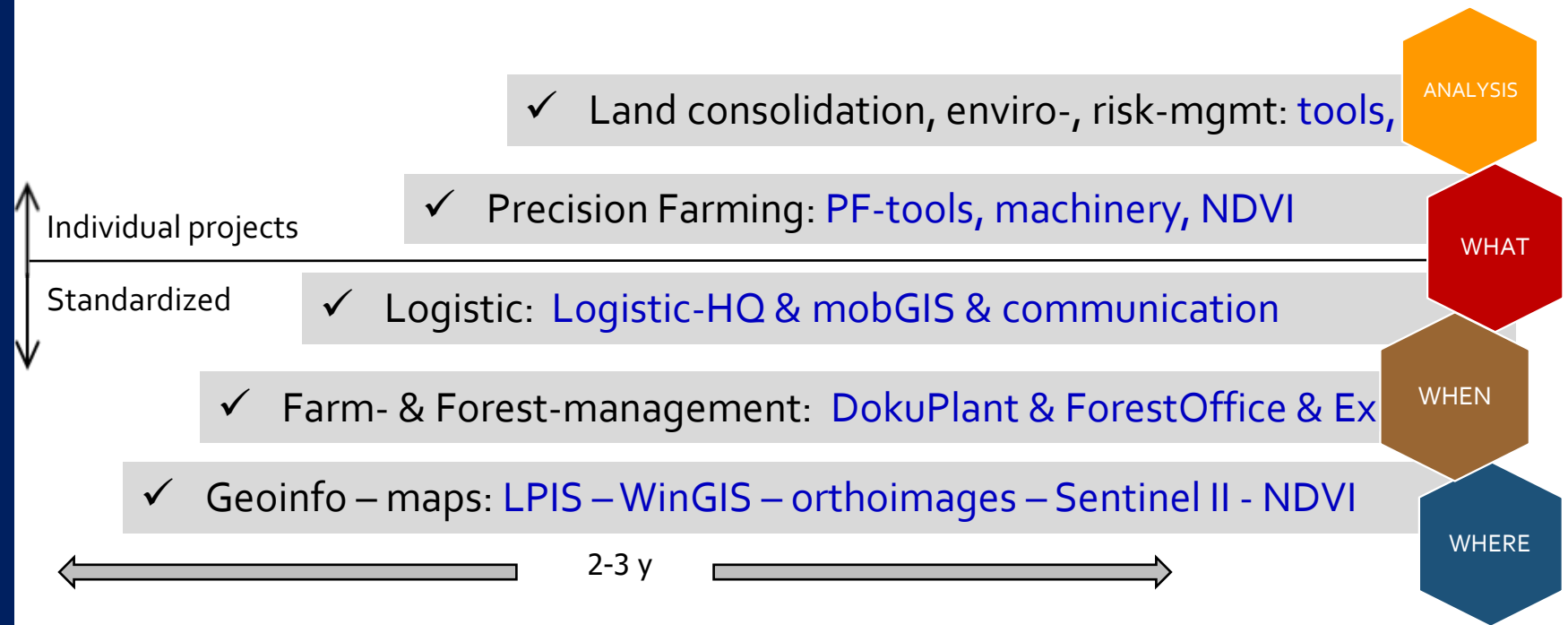
ICT PRODUCTS & PROCESSES

TASKS

TOOLS

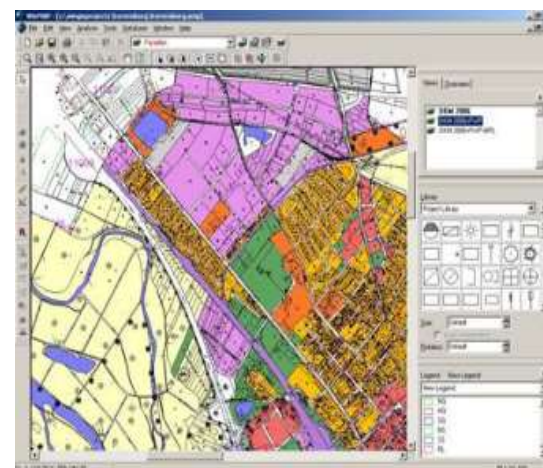
PREPARATION

MILESTONES

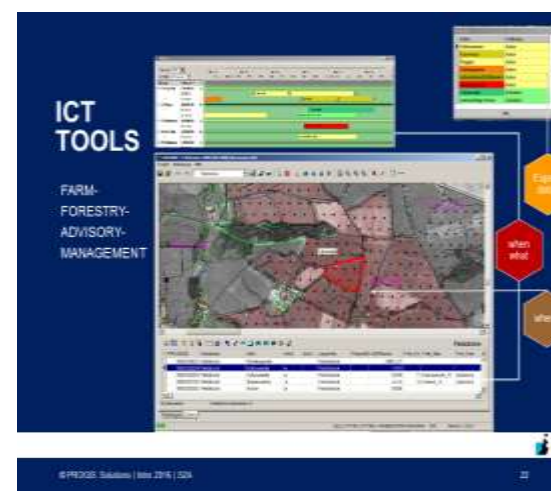


APPLICATIONS AVAILABLE TODAY

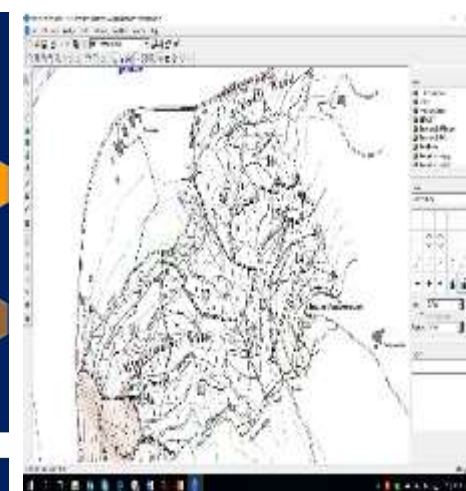
- WINGIS: Geographical Info System



- DokuPlant – Farm-management



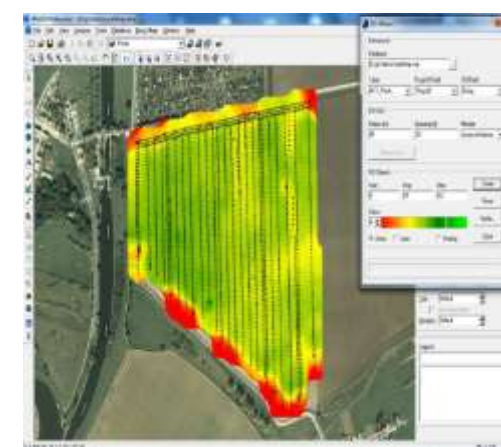
- ForestOffice - Forest inventory



- Technology Integration



- Logistics and mobGIS



- Precision Farming (PF) tools

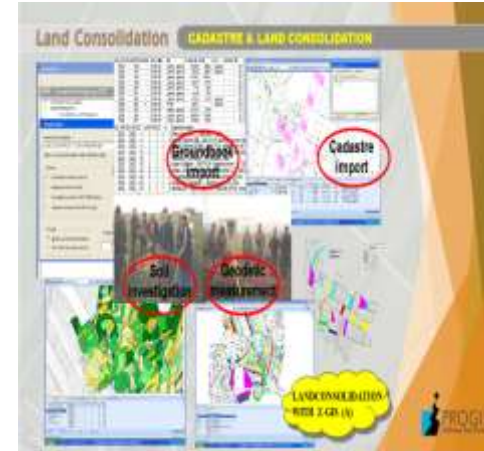
APPLICATIONS AVAILABLE TODAY

- Mobile technologies (Apps)



- Environment and natural risks
- (Apps & Know How)

- Land consolidation (Apps)



- Circular Flow Management
- + labs with NIRS technology
- + (Know How)

- Stakeholder Cooperation (Know How)



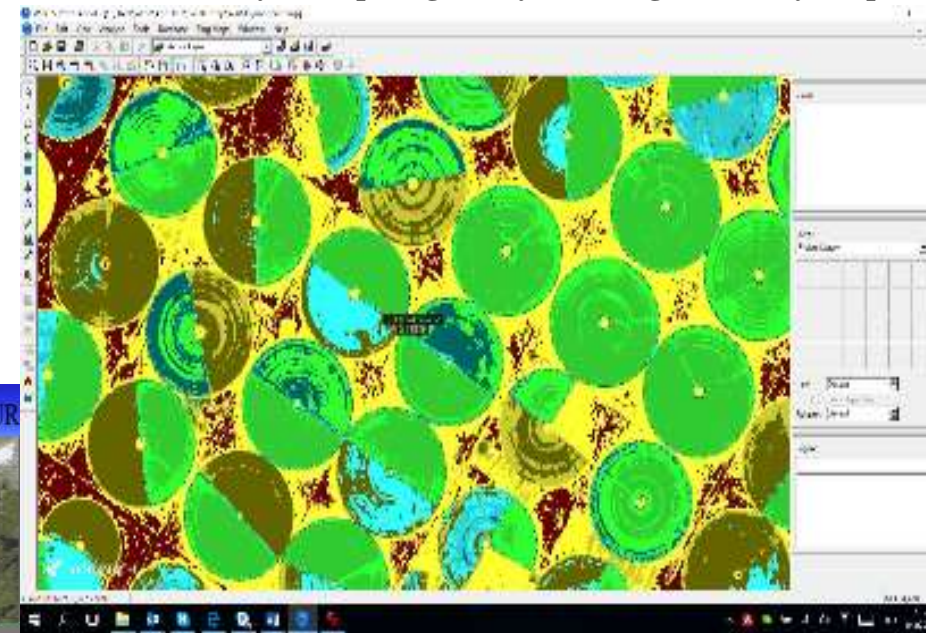
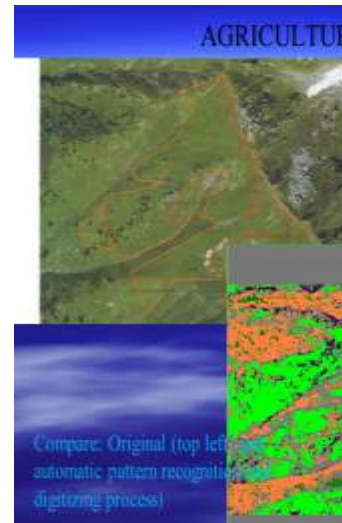
- Animal registration - census
- Tagging and documentation of all changes (birth, sales, slaughtering, ...)
- GPS based geo-fencing
- Traceability .. to consumers
- IoT sensors for optimized feeding
- (pH, nutrients)



- Animal Census: registration, identification, tracing, geo-fencing
- (Apps & Know How)

NEW apps & NEW buss.models

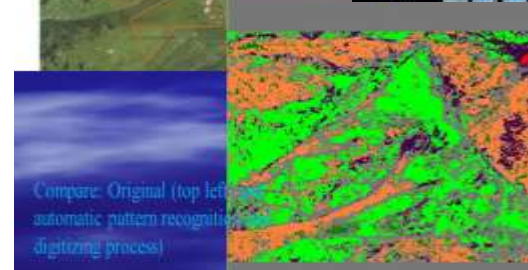
NEW: see all details



NEW: Farmer's gourmet



NEW: EC Sentinel II - growth-index



SDK

NEW: IDIMA pattern recognition

NEW: Franchised food chain: "Gourmet"
Farmer as entrepreneur + i-net + logistics

- Technology & organizational consultancy – entire countries or on demand
 - Education models, postgraduate education: farmers, advisors, Universities
- 40 years ICT in agriculture – forestry – environment – natural risk management
500 man-years of experience

Spill Over Effects

Financial – Real Agri Sector

- Banking
- Insurance
- Industry and trade - Marketability
- Sustainability by priced in externalities
- Service Sector Development (Advisories)
- Health and Elder Peoples Care Facilities, eco-social topics etc.
- Food quality and food waste
- Smart city plus smart rural areas = smart continuum
- Land consolidation
- Environmental caretaking and natural risk-management
- ++++++

BENEFITS

Economic – Ecologic - Social

- Location & Time integrated production data for farmers/advisors
 - Save costs and increase income
- Real Time financial data (production data): banks, insurance, MoA
 - Access to finance and insurance
- Risk Management Tools integration for environment & climate
 - Reduce risks, support environment
- Powerful features for enhancement (integrate buyers / suppliers)
 - Increase productivity, sustainability, marketability of production
 - by technology integration and stakeholder cooperation
- NEW: Sentinel based NDVI shows actual growth and forecast
- NEW: IDIMA shows new findings incl. changes “online”
- NEW: Sentinel NDVI + IDIMA shows “videos of change”
- NEW: actual planning, implementation, control, compensation
- NEW: SDK allows worldwide apps to be developed and linked
- NEW: Sentinel+WinGIS+BING+IDIMA+Ph(T)ablet+Windows 10=
 - Lowcost tool for global future planning with local sector-integration!

Organisational Effects

- Public – private
- national – international
- stakeholder cooperation

- **AGRICULTURE – FORWARD THINKING MODEL I**
- (USABLE FOR OTHER GIS RELATED SECTORS as well as it is a general principle!)
- **Private ownership** of ground and ownership of information!
- **Responsibility** for the results!
- **Greed**: land-grabbing, giant agro-investments – wrong ROI only!
- **Environment-** and **natural risk** management – who takes care!
- **New technologies** need organizational change!
- **Cooperation needed** for complex problems
- Schumpeter – **Creative Destruction** – no change yet!
- **Technology integration and stakeholder cooperation!**
- **Cross-sector** and **Cross-country** needs!
 - Agriculture – forestry – environment- natural risks
 - many each other influencing other sectors
- **Trust center – Data security – Encryption!**

NEXT steps

- Public + private - coop needed
- Research + practice - coop need
- Cross border solutions – coop need
- Stakeholder integrate – coop need
- Refugees problem – coop need
-

- AGRICULTURE – FORWARD THINKING MODEL II
- **Cooperation Research and Practice** urgent needed
 - Multidisciplinary Research
- **Agriculture decision-makers are not aware of IT possibilities**
 - Agro-decision-makers block – no or to less know how
 - No education in geodesy and photogrammetry???
- Due to competition fast decision needed – “**first wins**”
- Link to **education** and refugees problem possible – concepts clear
- Europe/US and other **continents needs better cooperation:**
 - We need changes – fast!!!!
 - Speed must be increased dramatically to avoid future problems!
 - Food and environment is borderless!!!!
- **Agro-Forest-Environment-natural risks can be the fundament for a political paradigm shift urgent needed!**
 - Common sense comes from education by nature

NEW 2017





PROGIS
Software GmbH

WinGIS LUMEN REAL

- Tablet-PC
- WinGIS LT
- MS Bing Maps orthophoto as background (30cm resolution)
- LPIS Data Import (IACS/Invekos)
- Sentinel II Pictures(10m resolution)
- 5-10 daily update frequency
- NDVI growth index

39.-
p.m

mobGIS

- Q 4/2017
- Upgrade from WinGIS LUMEN to mobGIS with access to central Logistic database
- receive your logistic orders directly on the tablet
- The control center constantly sees all machines on-screen with any update frequency of 30 minutes and
- receives a log of the billing (km, ha, h)

29.-
p.m

Orthophoto NDVI - Index



This example shows growth differences of up to 60%
WHY ?

OTM (Open Transport Map) OSM (Open Street Map)

Q 1/2018
With the possibility to digitize your rural path (agriculture, forestry, alpine meadows) and to link them with attributes (width, max. t., max. height, blocked from t bis t, curve radius.....)

19.-
p.m



- **WinGIS LUMEN**
- + Tablet Windows 10 + Android + 4GB
- + WinGIS-LT
- + Bing maps (JRC certified)
- + EC Sentinel II + NDVI
- + for all fields worldwide
- + update all 5-10 days
- .
- .
- .
- .
- .
- 2017:
- IDIMA change-detection
- NDVI +35 – soil line
- Forecast - different crops

I	A
E	I

WinGIS

LUMEN Real

Sentinel II NDVI

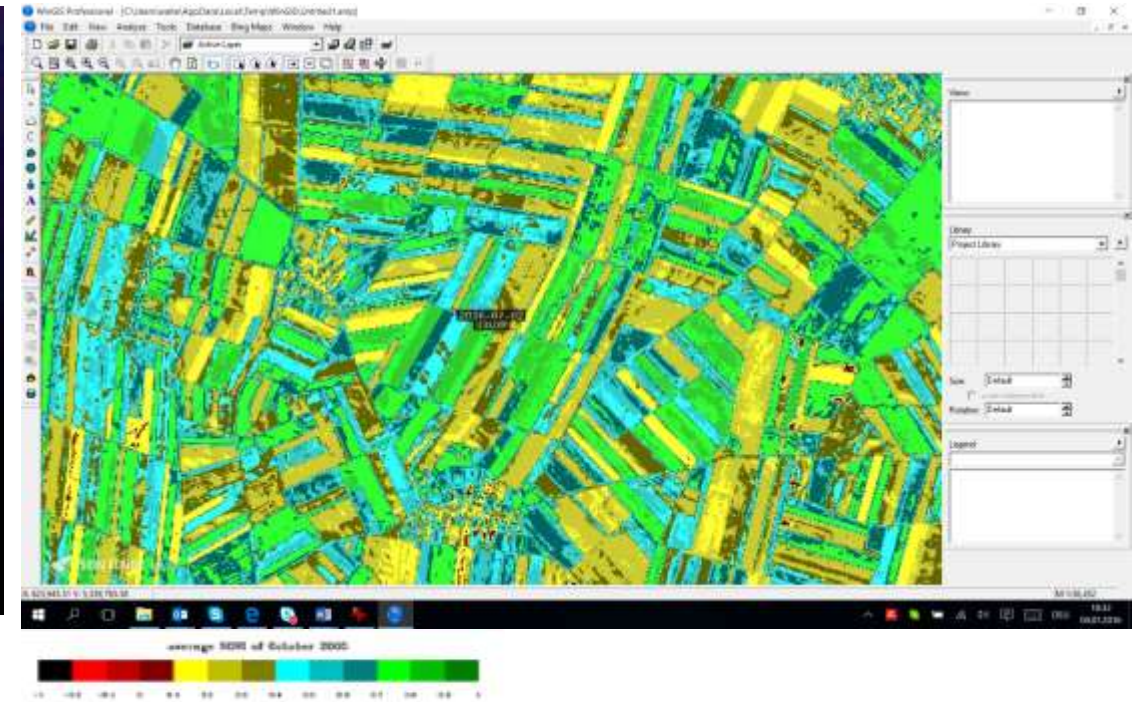
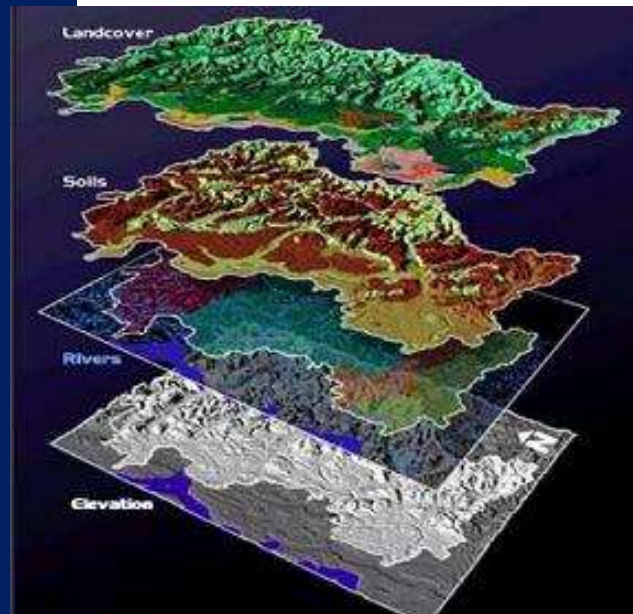


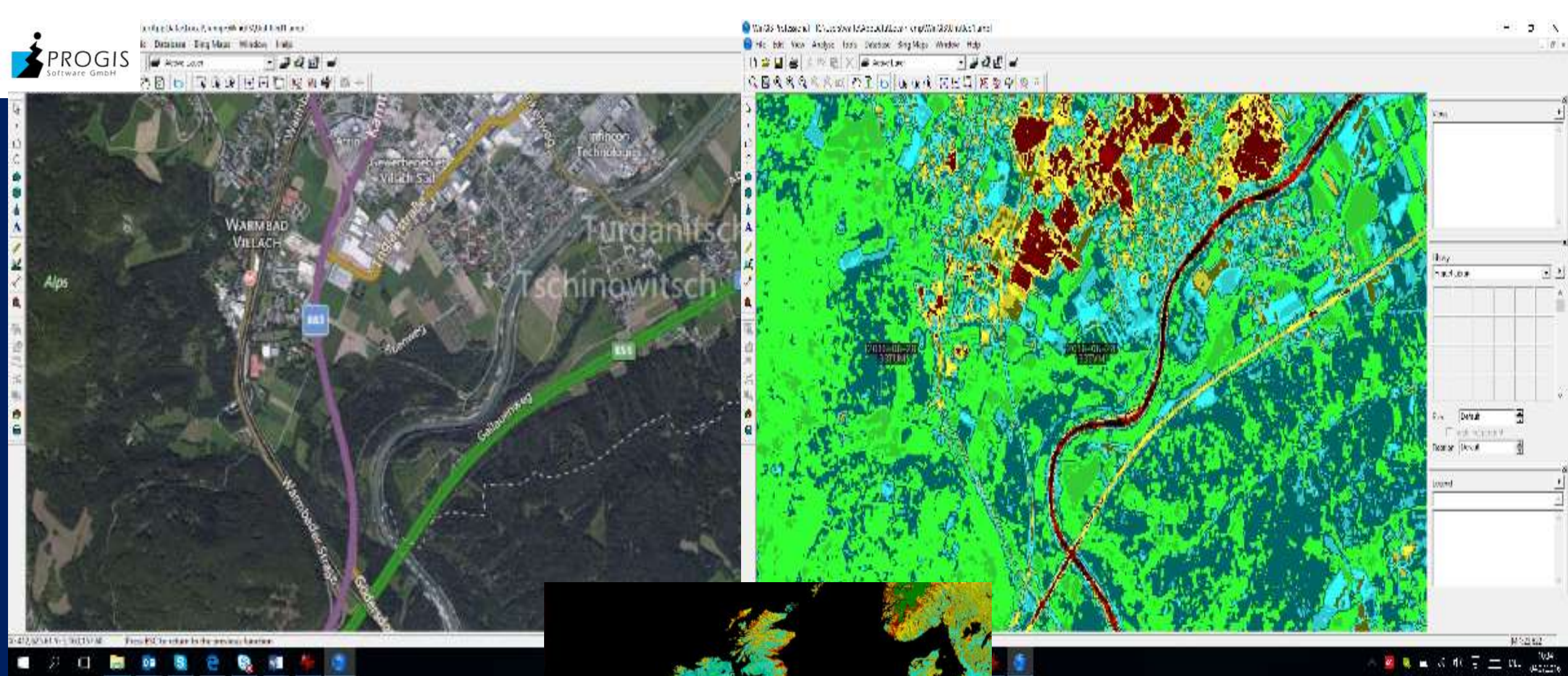
LUMEN REAL

A

I

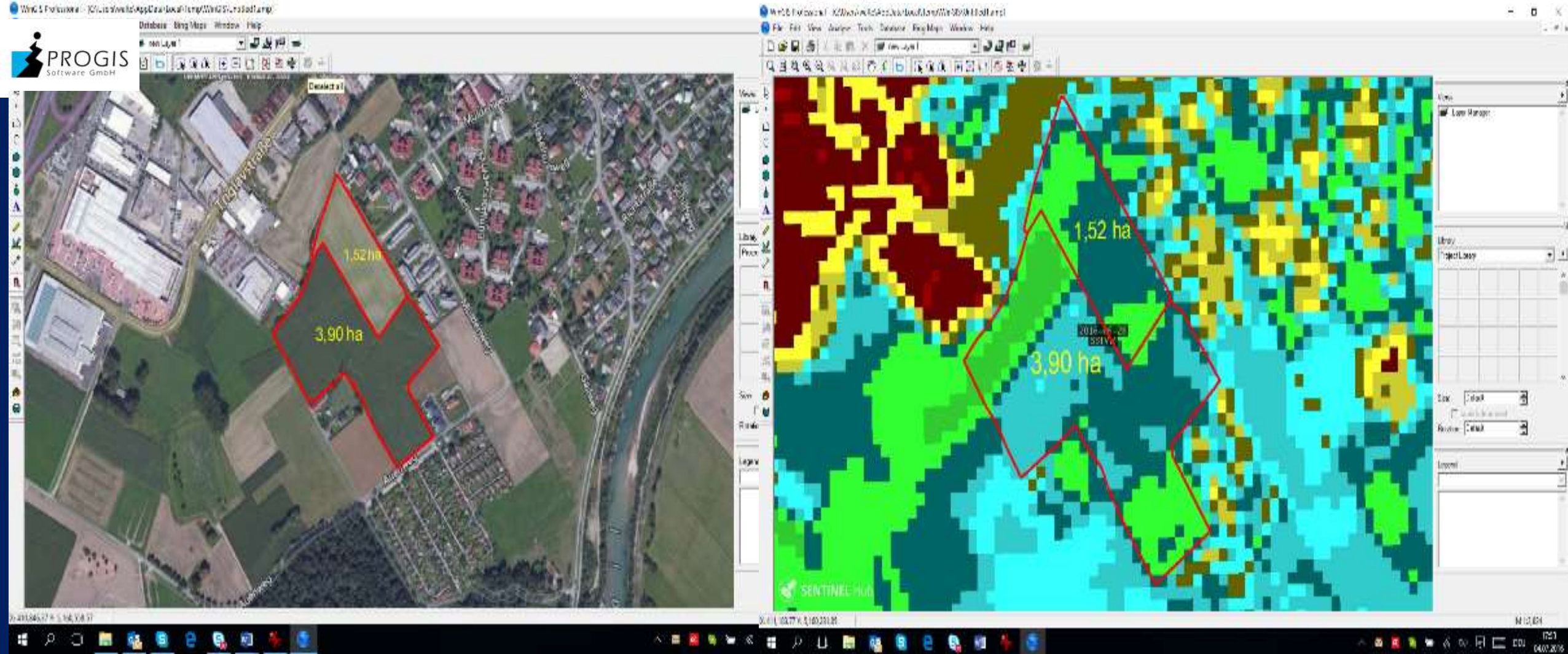
GIS Layers





Orthoimage – Villach/A South

NDVI Index - Villach/A South

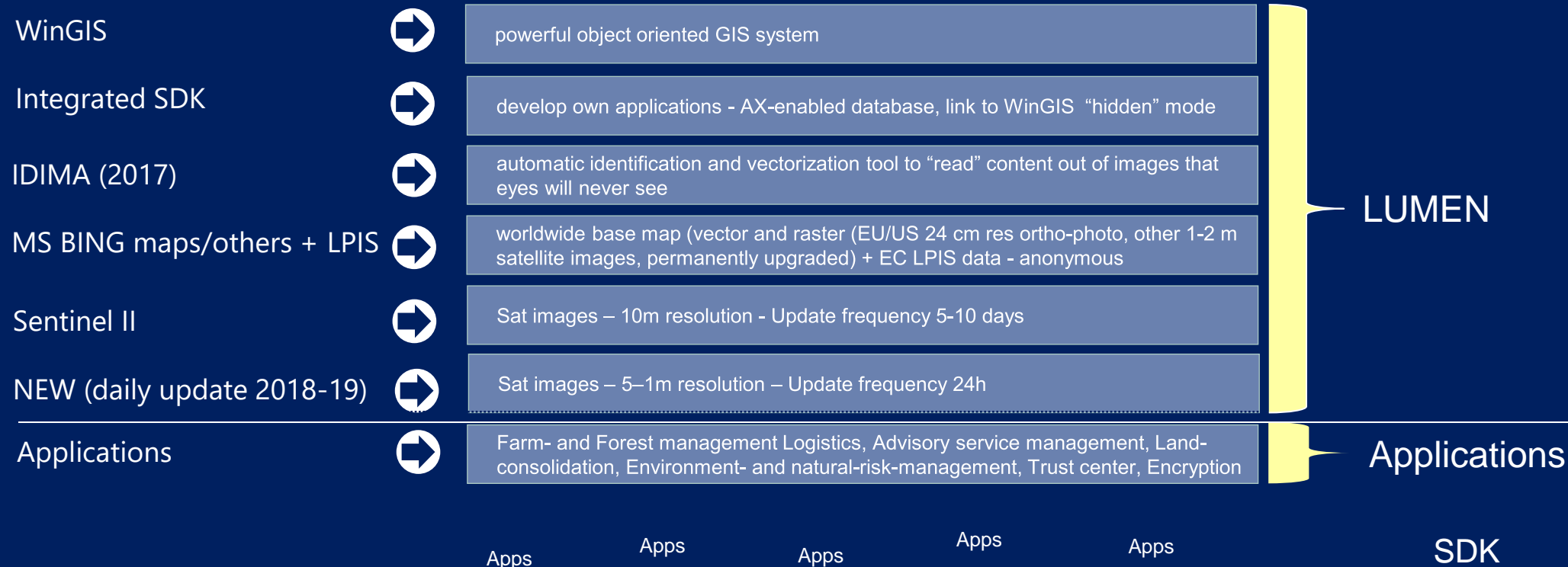


Orthoimage 25cm + LPIS polygons (either via Ministry or digitized or GPS-Import)

NDVI Index from 0,4 – 1,0 in one field! Why?
New all 5-10 days, mail info if new!



WinGIS + SDK + IDIMA + DATA (Bing map, Sentinel II, new)



FOODIE:

Farm
Oriented
Open
Data
In
Europe

EC funded
project
2014 – 2017
grant 621074
6 Mio € project

CHALLENGE

The agriculture sector is a strategically unique sector which should ideally be constituted by a network of interacting organizations. In carrying out their activities, such stakeholders have to manage many different and heterogeneous sources of information, such as:

- definition of policies,
- valuation of ecological performances,
- development of sustainable agriculture, crop recollection, and definition of timing and pricing,
- plagues detection.

In this context, future agriculture knowledge management systems not only have to support the direct profitability of agriculture or the environmental protection, but also have to combine and coordinate the efforts and the behaviours of the agri-food industry, consumers, public administrations and wider stakeholders communities.



Miguel Ángel Esbri (Project Coordinator)
Atos Spain, S.A.
C/ Albarracín, 25 - 28037 Madrid (Spain)
Email: miguel.esbri@atos.net
contact@foodie-project.eu

"The content of the brochure reflects only the author's views and the European Union is not liable for any use that may be made of the information contained therein."

www.foodie-project.eu



FOODIE

FARM-ORIENTED OPEN DATA IN EUROPE



This project is partially funded under the ICT Policy Support Programme (ICT PSP) as part of the Competitiveness and Innovation Framework Programme by the European Commission under grant agreement no. 621074

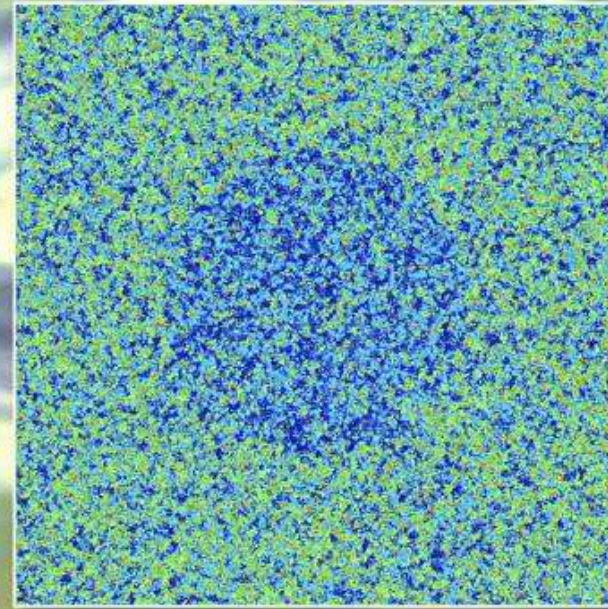
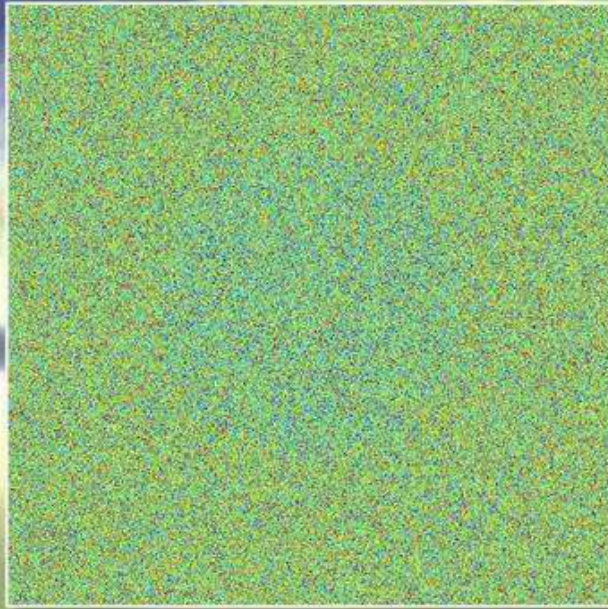


CIP-ICT-PSP-2013-7 Pilot Type B

Pattern recognition with IDIMA

Left: pattern recognition with your eyes

Right: pattern recognition with **IDIMA**



AGRICULTURE



Original picture – BING image 25 cm ortho-retified - Austrian Alpine farm in Styria (red lines: you see also the incorrect manual digitizing process!!!)



IDIMA [IDentification of IMAgés]

WINGIS + BING + IDIMA



A classification module creates an objective classification

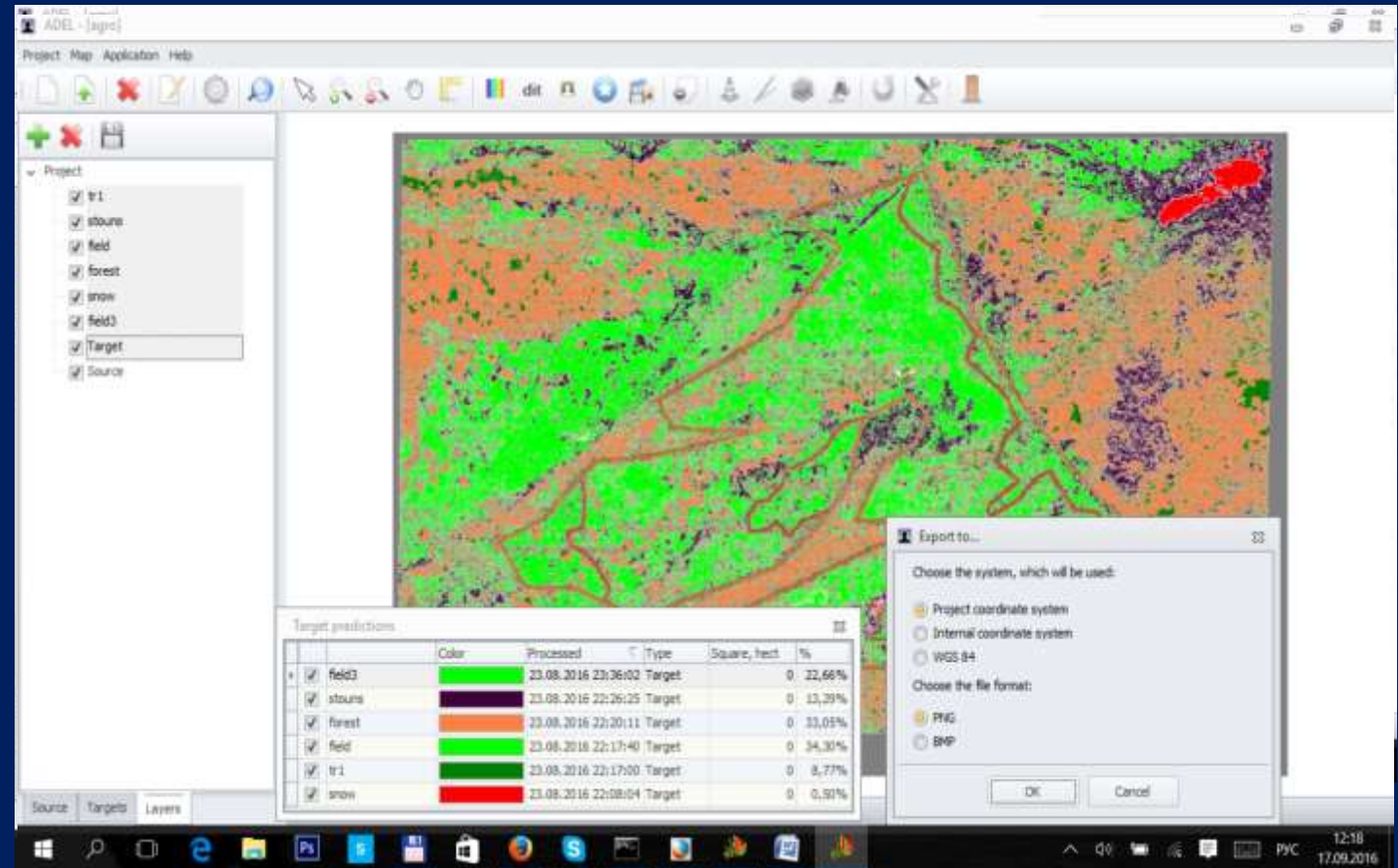
Loading source image & define projection & coordinates

Selecting parameters for classifying Consistent Structure

Automatic classifier mode creates a classified structure

Setting targets for creation of thematic raster maps

Exports the raster map for the automatic vectorization



Roadnetwork in the mountains 3D



View from SSW

Roadnetwork in the mountains



View from NO

Q&A

QUESTIONS
ANSWERS

