The background of the slide features a low-angle shot of the Burj Khalifa, a tall skyscraper with a distinctive tiered design, reaching towards a clear blue sky. In the foreground, the fronds of palm trees are visible, some on the left and some on the right, framing the central building. The overall image has a slightly faded or semi-transparent effect to allow the text to be clearly visible.

Sustainable Urban Design & **Construction**

24 JAN 2017 : 2:00PM – 3:30PM

Introduction of **TURNERINTERNATIONAL**

3rd Largest
Builder

\$14⁺ Billion
Annually

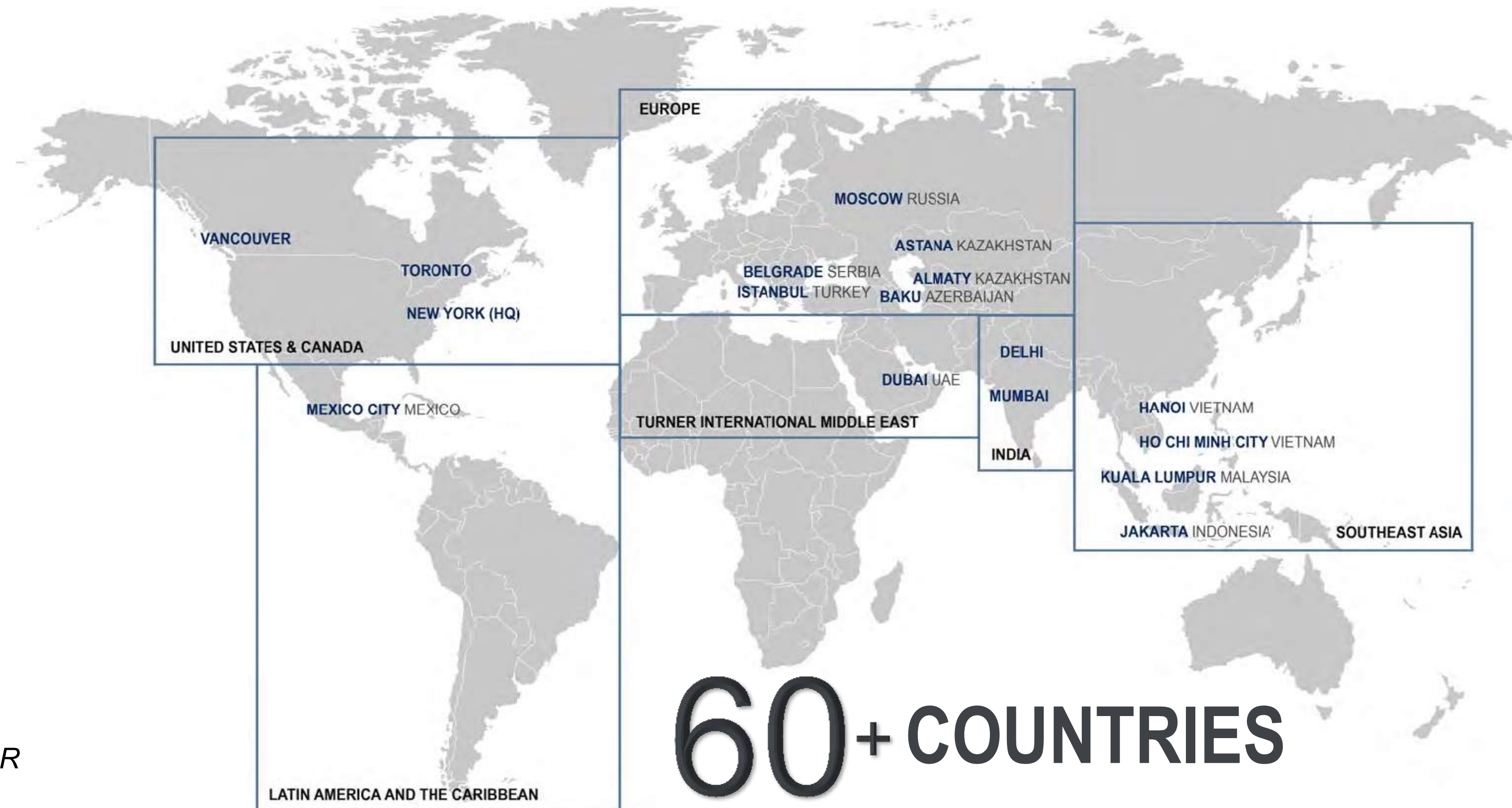
5600⁺ Employees

1500⁺ Annual
Projects



*Henry C. Turner, Founded 1902
Turner Construction Company*

*"WE ARE AWARDED MOST OF OUR
WORK BASED ON REPUTATION.
THIS IS THE FOUNDATION OF OUR
COMPANY"*



60⁺ COUNTRIES

**TURNER GLOBAL REACH &
INTERNATIONAL EXPERIENCE**

Turner

A stylized green leaf graphic with three leaves, positioned on the left side of the slide.

Turner and **SUSTAINABLECONSTRUCTION**



Economic **Sustainability:**

increasing profitability by making more efficient use of resources including labor, materials, energy and water



Environmental **Sustainability:**

protecting the environment from the impact of emissions, effluent and waste and where possible, enhancing it and using natural resources, carefully



Social **Sustainability:**

recognizing the needs of all stakeholders impacted, from inception of a project to demolition, including workforce, community, the supply chain and end users.



THE TRIPLE BOTTOM LINE



Turner's Experience

#1 ENR Ranked
GREEN Builder
2007 - 2016

496 LEED
Certified
Projects

339 LEED
Registered
Projects

1477 LEED
Accredited
Professionals



ENR 2016 Top 100 Green Building Contractors

Rank 2016/2015	Firm	Green Accredited Staff	Green Contracting Revenue
1/1	THE TURNER CORP., New York, N.Y.	1,477	5,701.00
2/2	CLARK GROUP, Bethesda, Md.	375	2,620.00
3/16	HENSEL PHELPS, Greeley, Colo.	304	2,285.83
4/6	SKANSKA USA, New York, N.Y.	481	1,941.40
5/10	SWINERTON INC., San Francisco, Calif.	350	1,918.00
6/4	GILBANE BUILDING CO., Providence, R.I.	424	1,746.36
7/5	THE WHITING-TURNER CONTRACTING CO., Baltimore, Md.	296	1,602.63
8/9	STRUCTURE TONE, New York, N.Y.	163	1,460.80
9/7	DAVID E. HARVEY BUILDERS, Houston, Texas	56	1,339.00
10/19	HOLDER CONSTRUCTION CO., Atlanta, Ga.	190	1,335.00



Founding
Member



TURNER SUSTAINABILITY PRACTICES



TRAIN OUR PEOPLE



LEAN OUR COMPANY



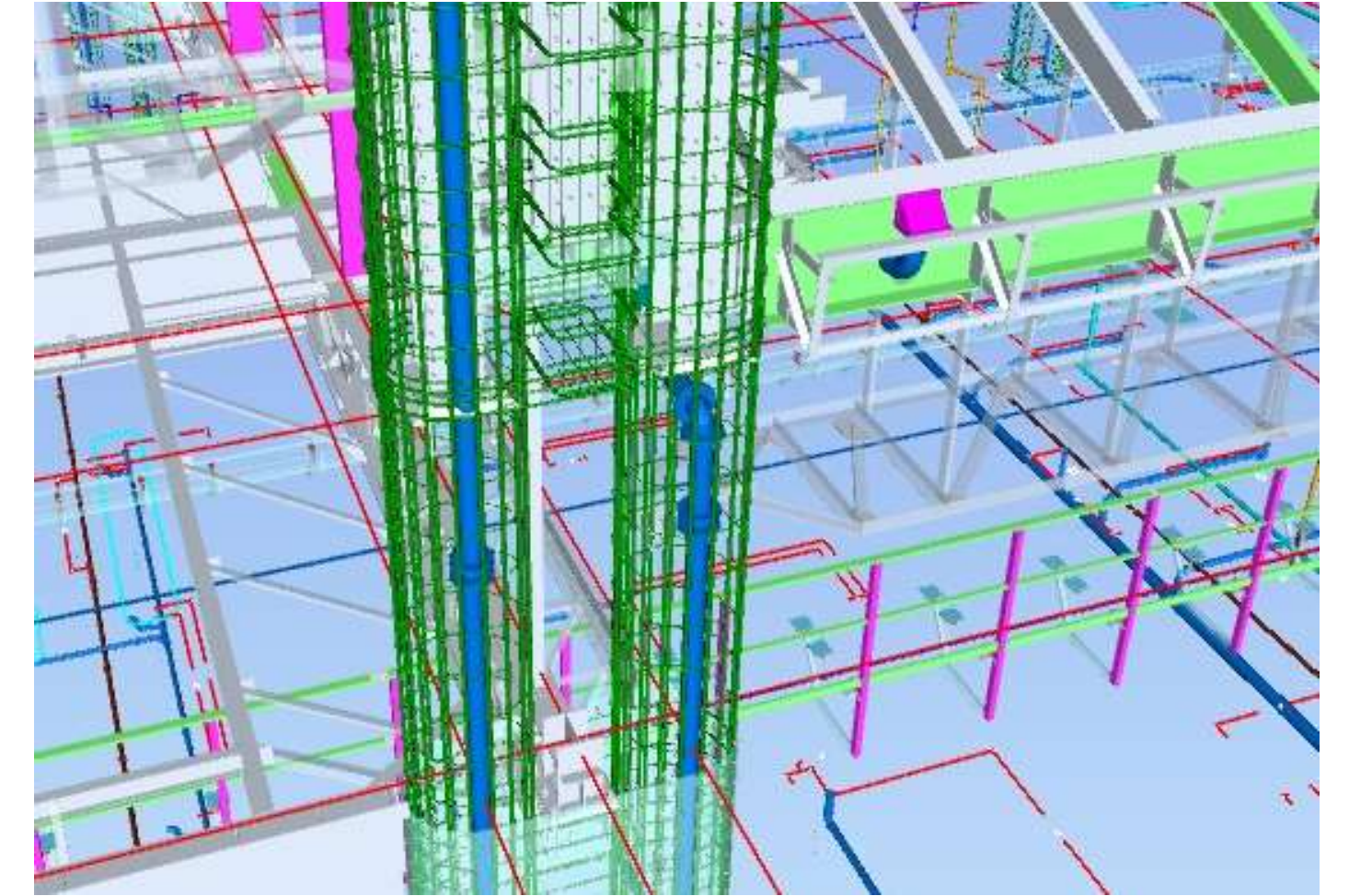
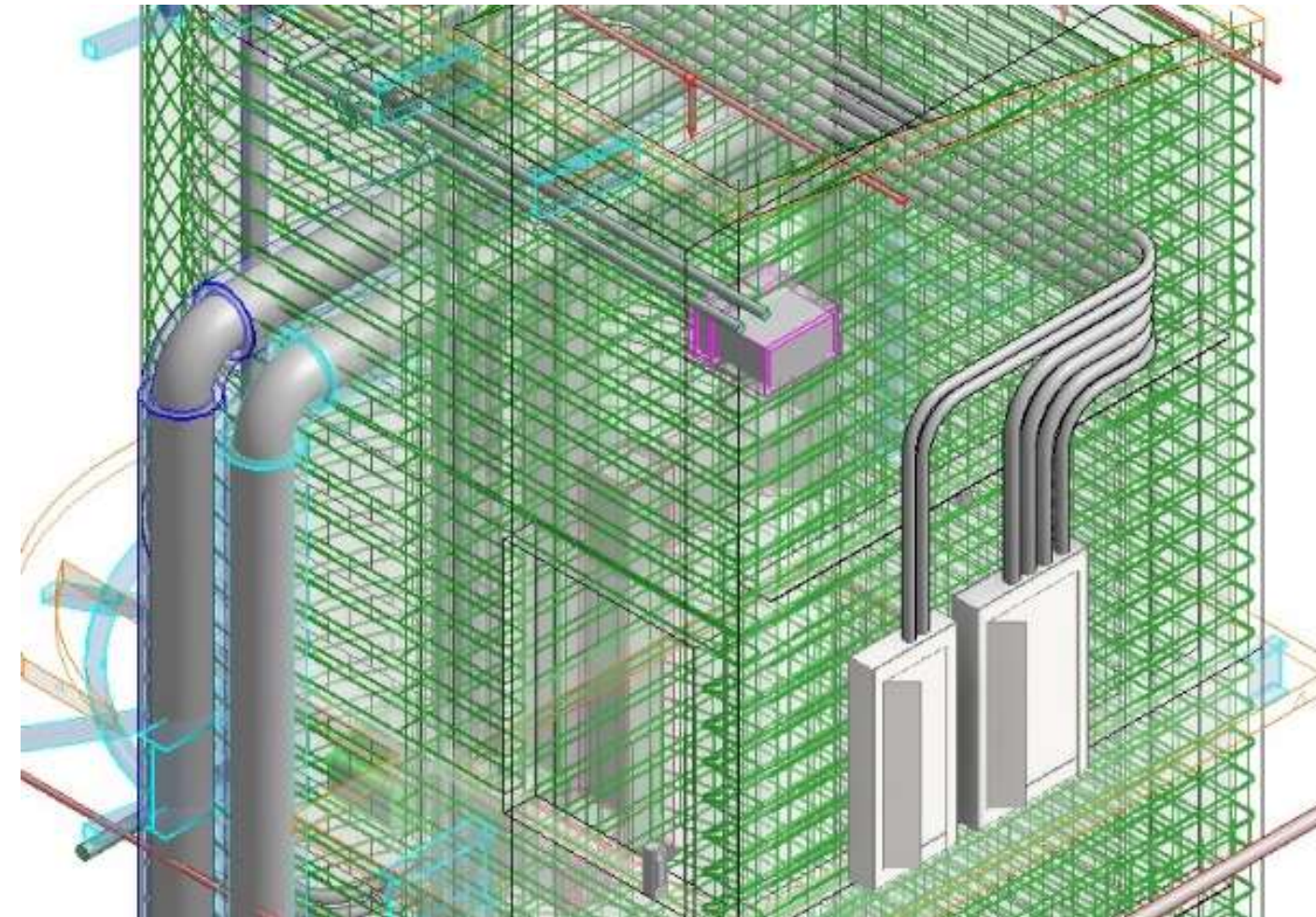
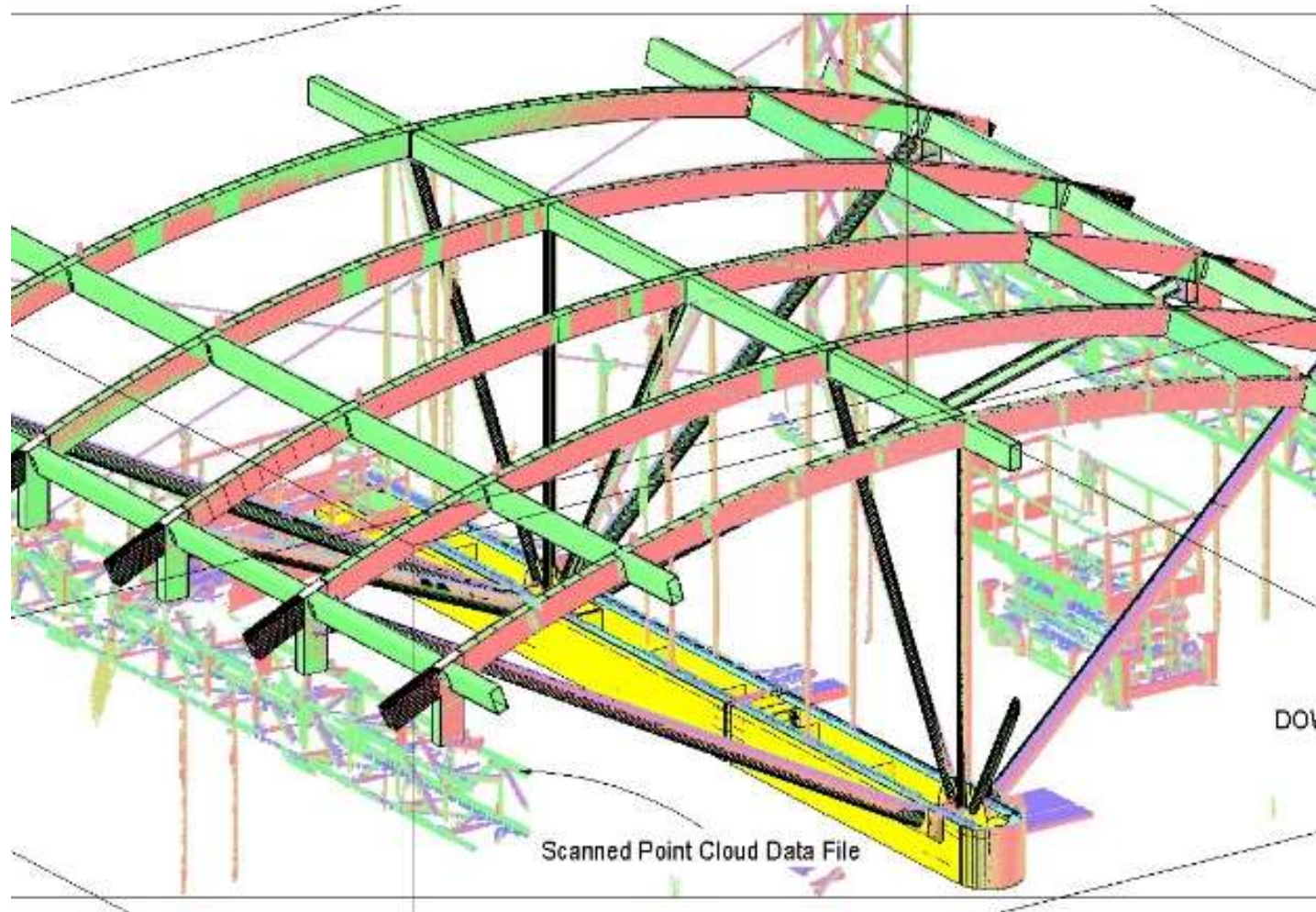
GREEN OUR PROJECTS



Achieving
LEANCONSTRUCTION

A CULTURE OF CONTINUOUS IMPROVEMENT

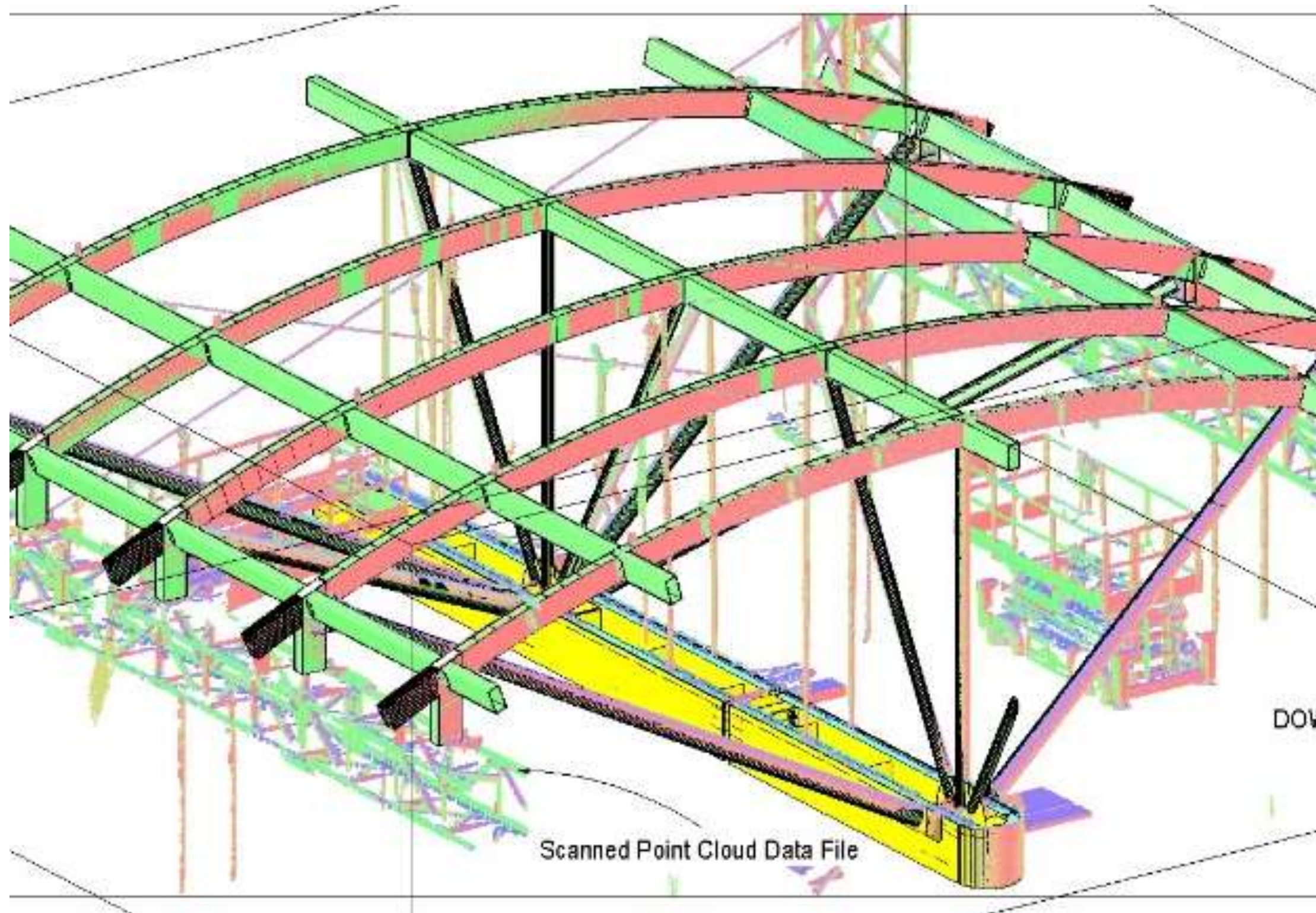
LEAN CONSTRUCTION



BUILDING INFORMATION MODELING [BIM]

- Turner has taken the BIM model beyond MEP coordination and has utilized it for site logistics, scheduling and increasing production. The model was utilized to help support the self perform concrete operation by creating fully coordinated shear wall lift drawings as well as modeling and coordinating the rebar within the round 42" double columns. The team used the model to create templates for the column reinforcing and coordination of items which allowed for increased productivity and quality assurance. The project team is also utilizing the BIM model to create coordinated exterior envelope detail drawings that can be reviewed by the team in the field to confirm sequence of installation as well as quality. The project team also utilized laser scanning and the model to confirm tolerances for the prefabricated steel modules prior to them being erected in place. All of this has helped the team find and solve problems before physically building.

LEAN CONSTRUCTION



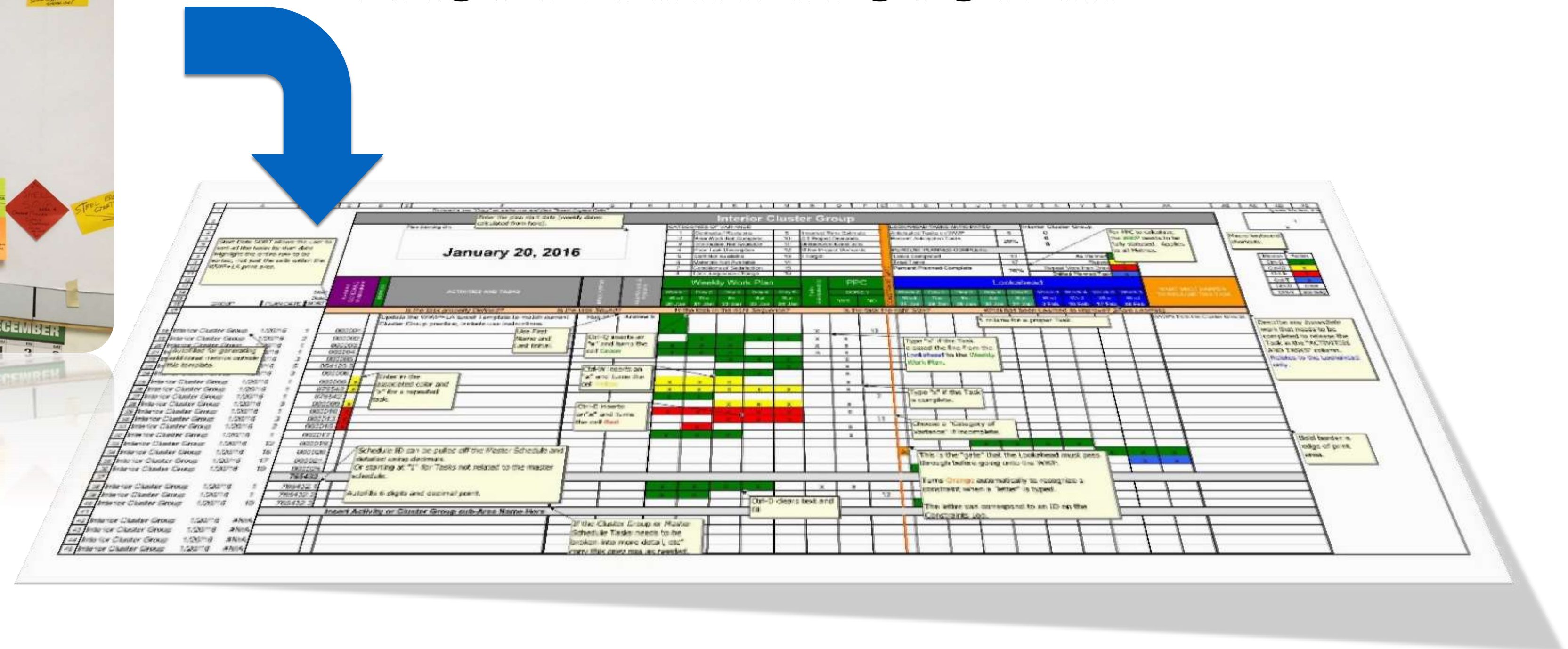
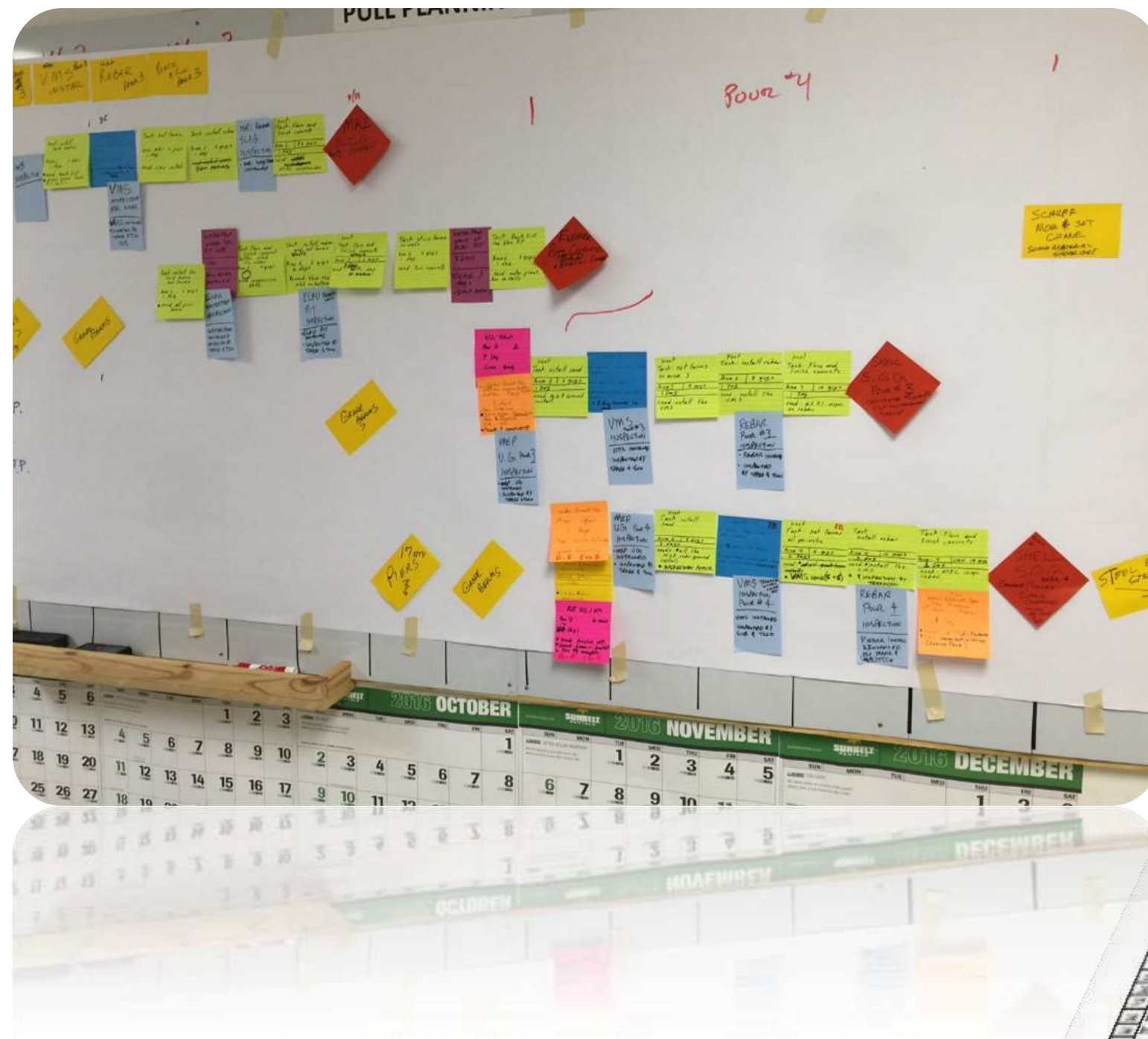
BIM & Prefabrication

- utilized laser scanning and the model to confirm tolerances for the prefabricated steel modules prior to them being erected in place.

LEANCONSTRUCTION

Successful plan implementation requires the schedule activities to be broken down to a micro level. Commitments are made, measured, and recapped on a weekly basis.

LAST PLANNER SYSTEM®



LEANCONSTRUCTION

Modular prefabrication systems, manufactured as complete single-room modules with all MEP systems and structural support, were a key component to accelerated delivery.



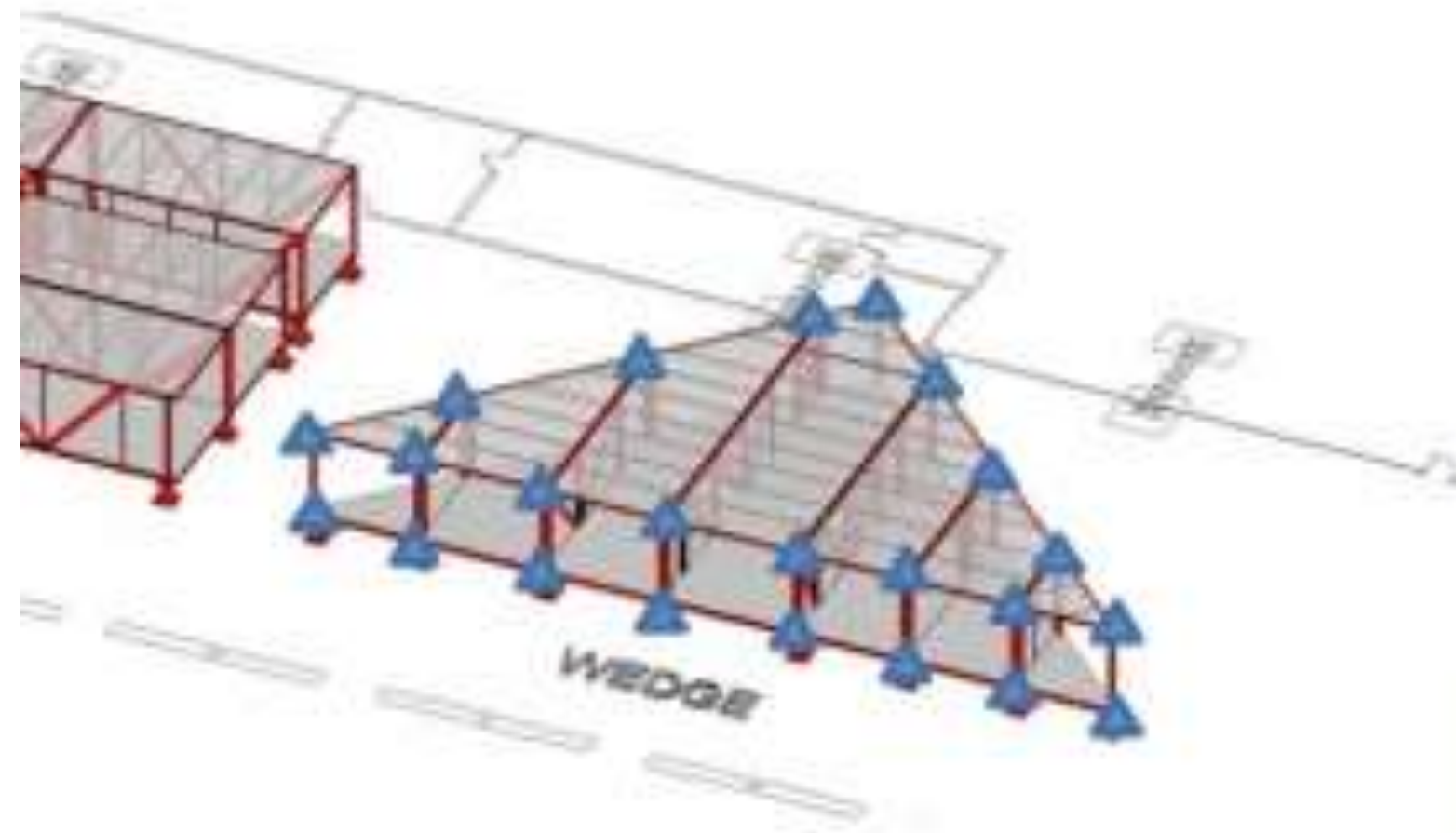
B2 BKLYN TALLEST MODULAR TOWER

LEAN APPROACH EMPLOYED:

- BIM
- 5S JOBSITE
- NOTHING HITS THE GROUND
- PREFABRICATION
- LAST PLANNER SYSTEM
- DAILY HUDDLES
- CONTINUOUS IMPROVEMENT

LEANCONSTRUCTION

Modular prefabrication systems, manufactured as complete single-room modules with all MEP systems and structural support, were a key component to accelerated delivery.



World Coordinate datum and points
in 3D Model.

Coordinates replicated in factory to mimic exact
site positions.



LEANCONSTRUCTION

Modular prefabrication systems, manufactured as complete single-room modules with all MEP systems and structural support, were a key component to accelerated delivery.



LEANCONSTRUCTION

Modular prefabrication systems, manufactured as complete single-room modules with all MEP systems and structural support, were a key component to accelerated delivery.



LEANCONSTRUCTION

Modular prefabrication systems, manufactured as complete single-room modules with all MEP systems and structural support, were a key component to accelerated delivery.



MARKET REALITIES

Real Estate Bill: Errant promoters and builders face 3-year jail

Home buyers can now look forward to a better deal from builders with the Real Estate (Regulation and Development) Bill, 2013, being approved by the Lok Sabha on Tuesday five days after it was cleared by the Rajya Sabha.



Mail Today | Posted by Bijaya Kumar Das
New Delhi, March 16, 2016 | UPDATED 08:27 IST

A+ A-



EXPAND IMAGE

Home buyers can now look forward to a better deal from builders with the Real Estate (Regulation and Development) Bill, 2013, being approved by the Lok Sabha on Tuesday five days after it was cleared by the Rajya Sabha.

It will now be difficult for promoters and builders to delay projects as the new imprisonment of up to three years apart from monetary penalty for violation of the Bill provides for setting up of a Real Estate Regulatory Authorities (RERAs) to ensure timely execution of projects. RERAs will regulate transactions related to both residential and commercial projects and ensure their timely completion and handover.

Cabinet clears 20 major amendments to Real Estate Bill

By Ravi Teja Sharma, Kailash Babar, ET Bureau | 10 Dec, 2015, 10:38AM IST

Here is how homebuyers will benefit from real estate regulatory bill



NEW DELHI | MUMBAI: The Cabinet has approved 20 major amendments to the real estate regulatory Bill that seeks to protect home buyers as well as help boost investments in the real estate industry.

These changes are based on the recommendations of a Rajya Sabha committee that examined the Bill pending in the upper house of Parliament.

The cabinet has approved 20 amendments to the real estate regulatory bill that seeks to protect home buyers as well as help boost investments in the real estate industry

Under the amendments, projects on at least 500 sq metres of area or with eight flats will have to be registered with the proposed regulatory authority, instead of the minimum size of 1,000 sq metres suggested earlier, bringing a larger number of projects under the regulator's ambit.

Builders will have to deposit at least 70% of the sale proceeds, including land cost, in an escrow account to meet construction cost, compared with the earlier proposal for 50% or less, and pay interest to home buyers for any default or delays at the same rate they charge them. Builders will be liable for structural defects for five years, instead of two years earlier.

House That! Some of the major amendments:

Projects on at least 500 sq m or with 8 flats will have to be registered with the proposed regulatory authority. Min size of 1,000 sq m was suggested earlier. This brings a larger no. of projects under regulator's ambit. **Builders will have to deposit at least 70%** of sale proceeds, including land cost, in an escrow account to meet construction cost.

The earlier proposal was for 50% or less. **Builders will have to pay interest** to home buyers for any default or delays at same rate they charge them. **Builders will be liable for structural defects** for five years, instead of two years earlier. **Carpet area** has been clearly defined to include kitchen and toilets.

Garage will be kept out of the purview of definition of apartment. **Formation of residents' association** is compulsory within 3 months of the allotment of a majority of units in a project. **Aggrieved buyers** can approach consumer courts at the district level, instead of only the real estate regulatory authorities.

Cabinet approves 20 major amendments to real estate regulatory Bill

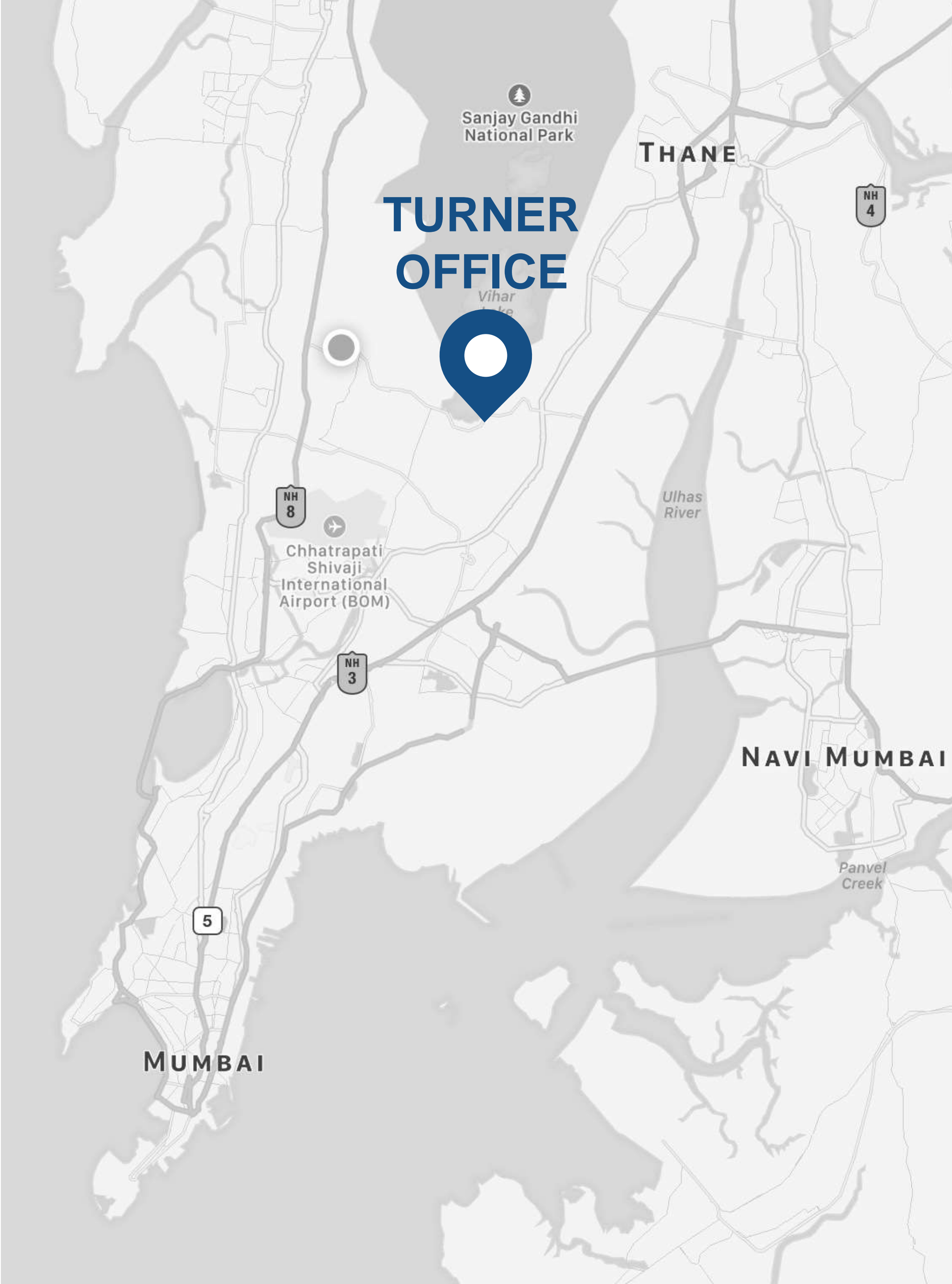


They seek to protect home buyers as well as help boost investments in realty



Changes based on proposals of Rajya Sabha panel





Turner Project Management India

Building the Future

A Wing, Suite 303-304, Delphi
Orchard Avenue, Hiranandani Gardens,
Powai, Mumbai 400 076



Jairam Panch – Managing Director
ipanch@tcco.com



+91 22 426 30 122



www.turnerconstruction.com