

Bringing Geospatial Research to Business Incubation

Dr. Raghunandan Rajamani

 Executive Director

Indian Science & Technology Entrepreneurs Park and
Business Incubator Association (ISBA)
India

Geospatial Frontline Areas of Business Incubation

- Open Source Technology
- Democratization of Geospatial Data
- Civilian Application of (UAV's)
- Geospatial Crowd Sourcing



Geospatial: Business opportunities based on Open Source Solutions

- **Quantum GIS**

- Desktop QGIS
- Q GIS Spatial File Browser
- QGIS Server (Publish records in OGC Standards)
- QGIS Web Client (Web Publishing)



- ❖ Powerful integration with GRASS (Raster Processing)



Democratization of Data

- Geospatial Information **Of** the People, **By** the People & **For** the People
- Believe in Open Data Repository for Raster and Vector Data
- Current Free Data Availability Scenario Worldwide

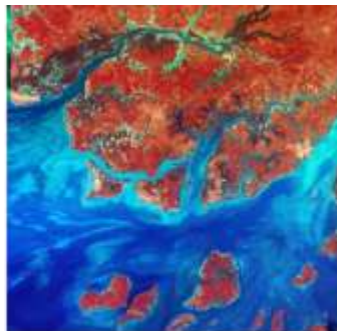
| No. | DATA | | | |
|-----|-------------------|-------------------------------------------------------------------|-------------------------------------------------------------------------------------------------|--|
| | Agency | Satellite Image/Data Availability | Frontline Application Area | |
| 1 | Landsat Images | USGS Landsat 8; Landsat 7, ETM++, MSS | Natural Resource Study, Regional and Landscape Level, Temporal Analysis, | |
| 2 | Indian Images | ISRO LISS III, AWIFs, Cartosat DEM; Bhuvan WMS, WMTS Services | Agriculture & Natural Resource Mapping a State Level, Water Resource Department | |
| 3 | Sentinel Data Set | ESA Sentinel 2, Sentinel 1 Synthetic Aperture Radar Data (SAR) | Emergency Response, Drought and Coastal Change Studies, Insurance Industry, Environmental Study | |
| 4 | SRTM/ ASTER | NASA/ JAXA Hydrologically Correct Digital Elevation Data | Watershed Analysis, Flood Plain Mapping, Emergency Response | |
| 5 | SPOT | FSA SPOT 1, 2, 3, 4, 5 | Agriculture & Forestry, Natural Resource Mapping | |



Free Data Availability



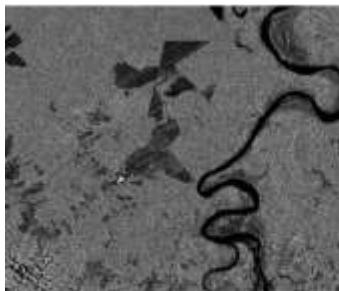
Landsat 8 True Color



Landsat 8 False Color



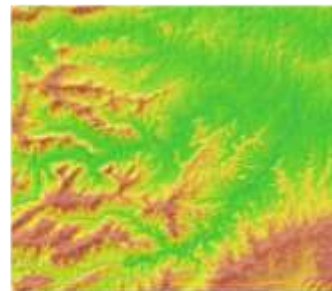
LISS III Data False Color



Sentinel 1 -SAR Data



SRTM DEM



Cartosat DEM

Civilian Application of (UAV's)



Civilian Application of (UAV's)

- Accurate Property Tax Mapping & Fast Decision Making
- Above Ground Electrical Asset Mapping
- Mapping of Probable Breeding Places of Dengue / Chikungunya Mosquitoes-Open Tank
- Identifying Buildings with Genset (Polluters)
- Real/Near real Time Damage Assessment (Natural Disaster)



Geospatial Crowdsourcing



- User Driven Collective Intelligence
- Voluntary Geospatial Information (VGI)-OSM
- Environmental Initiatives (Tracking Changes)
- Creating Citizen Scientists
- Geospatial Awareness

Media: Social Media; Web Platforms; Geotagged Photos/Videos



Geospatial Crowdsourcing

- Post Disaster Mapping and Helping Community and Search and Rescue Operations



Courtesy: NRSC/ISRO.



Courtesy: Tomnod Inc. & Digital Globe Inc.



- Mobile App Based Scientific data Collection
 - Distribution and Details Pre Loaded
 - User Records geotagged Photo
 - Records Sighting Detail
- (Used for mapping presence of Plant and Animal Species for Analytical Study of related Ecological Parameters)

Courtesy: Center of Ecology & Hydrology, UK



Various support options for start-ups

- Incubation support
 - Development labs and maker spaces
 - Co-working & Plug-n-play offices
 - Tech. & Business mentoring
 - Access to networks – investment, industry, govt.
- Business Acceleration
- Seed funding support



ISBA role in supporting start-ups and incubators

- Incubators
 - Capacity building
 - Sharing of best practices
 - International collaborations & networks
 - Advocacy
- Startups
 - ISBA Awards



Thanks